



# Walton Court

Sheen Park, TW9

Asking Price £675,000

Welcome to this spacious 3-bedroom ground-floor apartment located in Walton Court, Sheen Park, Richmond. Offering a generous 1,020 square feet of living space, this property presents a unique opportunity for those looking to create their dream home.

CHESTERTONS





# Walton Court

Sheen Park, TW9

- No onward chain
- Garage
- Central Location
- Very spacious accommodation
- Communal Gardens



A spacious ground floor three bedroom apartment with no onward chain and garage

Welcome to this spacious 3-bedroom ground-floor apartment located in Walton Court, Sheen Park, Richmond. Offering a generous 1,020 square feet of living space, this property presents a unique opportunity for those looking to create their dream home. The apartment is in need of full renovation, providing a blank canvas for customization to your own taste and style.

The layout includes three well-proportioned bedrooms, a large living area, and a separate kitchen space. The property also boasts the rare benefit of a private garage, providing secure parking and additional storage.

Situated in the heart of Richmond, the apartment is well-served by excellent transport links. Richmond Station is just a short walk away, offering access to both the District Line on the London Underground and South Western Railway services, ensuring easy connections to Central London and beyond. Numerous bus routes are also available, making local and city travel convenient.

With its spacious interiors, potential for renovation, and prime location, this property is a fantastic opportunity for buyers seeking a project in one of Richmond's most desirable area.

**Tenure:** Leasehold 101 years 11 months

**Service Charge:** £1872

**Ground Rent:** £0

**Local Authority:** London Borough of Richmond upon Thames

**Council Tax Band:** E

Energy Efficiency Rating	
	Current Potential
Very energy efficient - lower running costs	
A (92-100)	
B (81-91)	
C (69-80)	72 79
D (55-68)	
E (39-54)	
F (21-38)	
G (1-20)	
Not energy efficient - higher running costs	
England, Scotland & Wales EU Directive 2002/91/EC	

### *Chestertons Richmond Sales*

23a Friars Stile Road

Richmond

Surrey

TW10 6NH

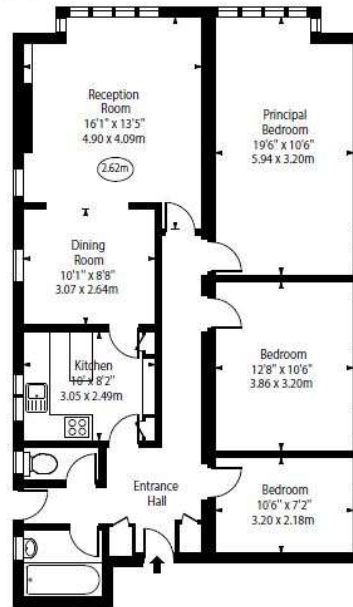
richmond@chestertons.co.uk

020 3758 3222

chestertons.co.uk

Walton Court, Sheen Park,  
Richmond,  
Surrey, TW9 1

○ - Ceiling Height



Ground Floor

Approx Gross Internal Area 1020 Sq Ft - 94.76 Sq M

For Illustration Purposes Only - Not To Scale

[www.goldlens.co.uk](http://www.goldlens.co.uk)

Ref. No. 024801E

