



Vine Row

Lancaster Park, Richmond, TW10

Asking Price £1,400,000

Welcome to this charming 4-bedroom townhouse located on Vine Row in the desirable Lancaster Park, Richmond.

Spanning 1356 sq.ft., this spacious property offers comfortable and stylish living, perfect for families or professionals seeking a blend of tranquility and convenience. The townhouse features four generously sized bedrooms, ideal for a growing family or those needing a home office space. The well-appointed kitchen comes equipped with modern appliances, and the bright, airy living areas are designed for relaxation and entertaining. With allocated parking, convenience is a given.

Situated in the heart of Richmond, this townhouse offers easy access to both the bustling town centre and the picturesque Richmond Hill village. Commuting is a breeze with several efficient transport options. Richmond Station is just a short walk away, offering fast and frequent services on the District Line, Overground, and South Western Railway, making central London easily accessible. Numerous local bus routes provide direct connections to surrounding areas and central London, while convenient access to major roads including the A316 and M3 facilitates easy travel by car to London and beyond. Living in Lancaster Park means being close to a variety of shops, restaurants, and recreational facilities in Richmond town centre. Enjoy leisurely walks along the River Thames, explore the historic Richmond Park, or indulge in the vibrant cultural scene that Richmond has to offer.

This property is within the catchment area of several outstanding schools, making it an ideal choice for families. The Vineyard School is renowned for its excellent academic record and nurturing environment. Marshgate Primary School is highly rated for its quality education and community involvement. Grey Court School, a top-rated secondary school, is known for its exceptional academic and extracurricular programs.

This delightful townhouse on Vine Row, Lancaster Park, Richmond, offers a perfect blend of modern living and convenience, surrounded by excellent transport links and top-rated schools. Don't miss the opportunity to make this wonderful property your new home.



Vine Row

Lancaster Park, Richmond TW10

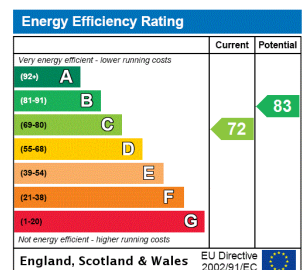
- 4/5 bedroom townhouse
- Allocated parking
- Desirable Richmond Hill location
- No onward chain



Tenure: Freehold

Local Authority: London Borough of Richmond upon Thames

Council Tax Band: G



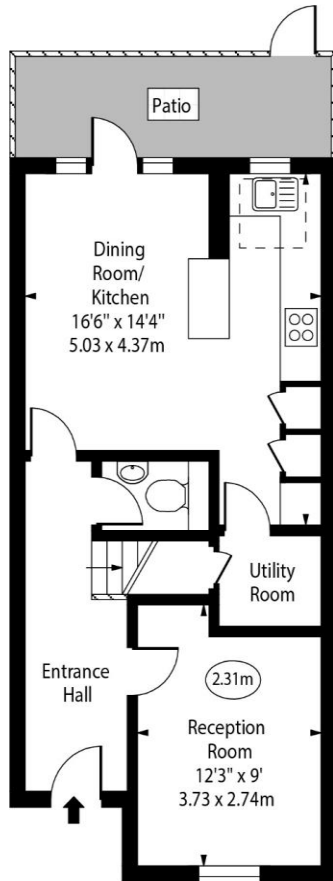
Chestertons Richmond Sales

23a Friars Stile Road
Richmond
Surrey
TW10 6NH
richmond@chestertons.co.uk
020 3758 3222
chestertons.co.uk

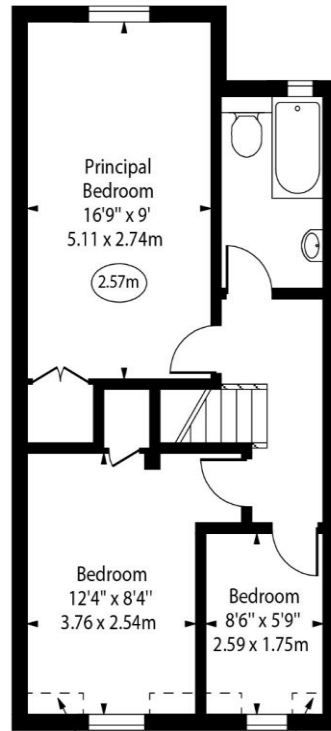
Vine Row,
Lancaster Park,
Richmond, TW10



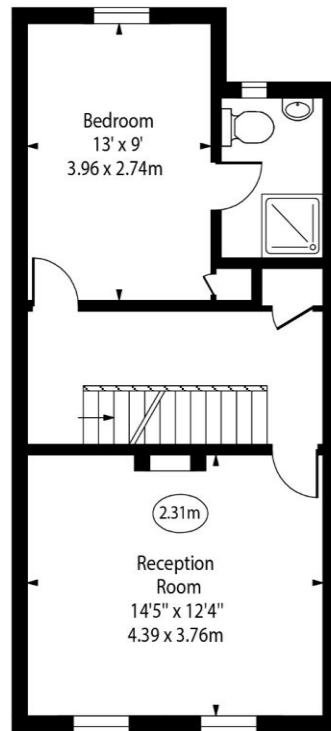
○ - Ceiling Height



Ground Floor



Restricted Height Area
Second Floor



First Floor

Approx Gross Internal Area

1347 Sq Ft - 125.14 Sq M

Approx. Floor Area Including Restricted Heights

1356 Sq Ft - 125.97 Sq M

For Illustration Purposes Only - Not To Scale

www.goldlens.co.uk

Ref. No. 024362E

Chesterton Global Ltd trading as Chestertons for themselves and for the vendor of this property whose agents they are, give notice that (i) these particulars do not constitute any part of an offer or contract, (ii) all statements contained within these particulars are made without responsibility on the part of Chestertons or the vendor, (iii) whilst made in good faith, none of the statements contained within these particulars are to be relied upon as a statement or representation of fact, (iv) any intending purchasers must satisfy themselves by inspection or otherwise as to the correctness of each of the statements contained within these particulars, (v) the vendor does not make or give either Chestertons or any person in their employment any authority to make or give representation or warranty whatsoever in relation to this property. Wide angle lenses may be used. ©Copyright Chestertons | Chesterton Global Ltd | Registered Office 40 Connaught Street, Hyde Park, London W2 2AB Registered Company Number 05334580.



This paper is
100% recyclable