



Onslow Road

Richmond, TW10

Asking Price £799,000

A generous two bedroom apartment located on one of Richmond's premier roads within walking distance to the amenities of Richmond village and Richmond Park.

The accommodation offers a very spacious reception presented in very good order and plenty of built in storage. There is a good size modern kitchen with a lovely view of the beautifully kept, large communal garden. There are not many properties in Richmond that offers such a glorious size garden as this apartment does.

The generous principal bedroom has plenty of space for a desk for those who are working from home. There is a second good size bedroom and modern bathroom/shower room. There is plenty of storage space in the property and added benefits include a share of the freehold and off street parking.

This is a wonderful apartment in a handsome building and these rarely become available. Please call our Richmond Sales team to book in your early viewing slot.



Onslow Road

Richmond, TW10

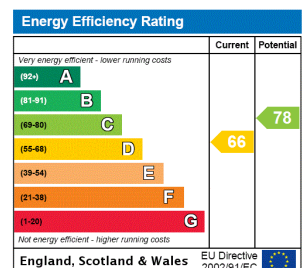
- Two bedrooms
- Communal garden
- Off street parking
- Share of Freehold



Onslow Road is ideally located for the local amenities on Friars Stile Road and is within walking distance to the town centre, where you will find a multitude of café's, boutique shops within the lanes that back onto Richmond Green. The riverside offers fine dining and a further mixture of retail and places to eat to suit all tastes.

Richmond is serviced by Richmond train station with fast trains into Waterloo and Reading, along with the District Line and the North London Line. Numerous bus routes are available into Central London and the City and out further towards Twickenham. For road users, the A316 gives great access to the M25 and Heathrow Airport.

Tenure: Share of Freehold – lease expires January 3004
Service Charge: £1000pa covering buildings insurance and accountancy fees
 £700pa contribution to sinking fund
Ground Rent: £0
Local Authority: London Borough Of Richmond Upon Thames
Council Tax Band: E



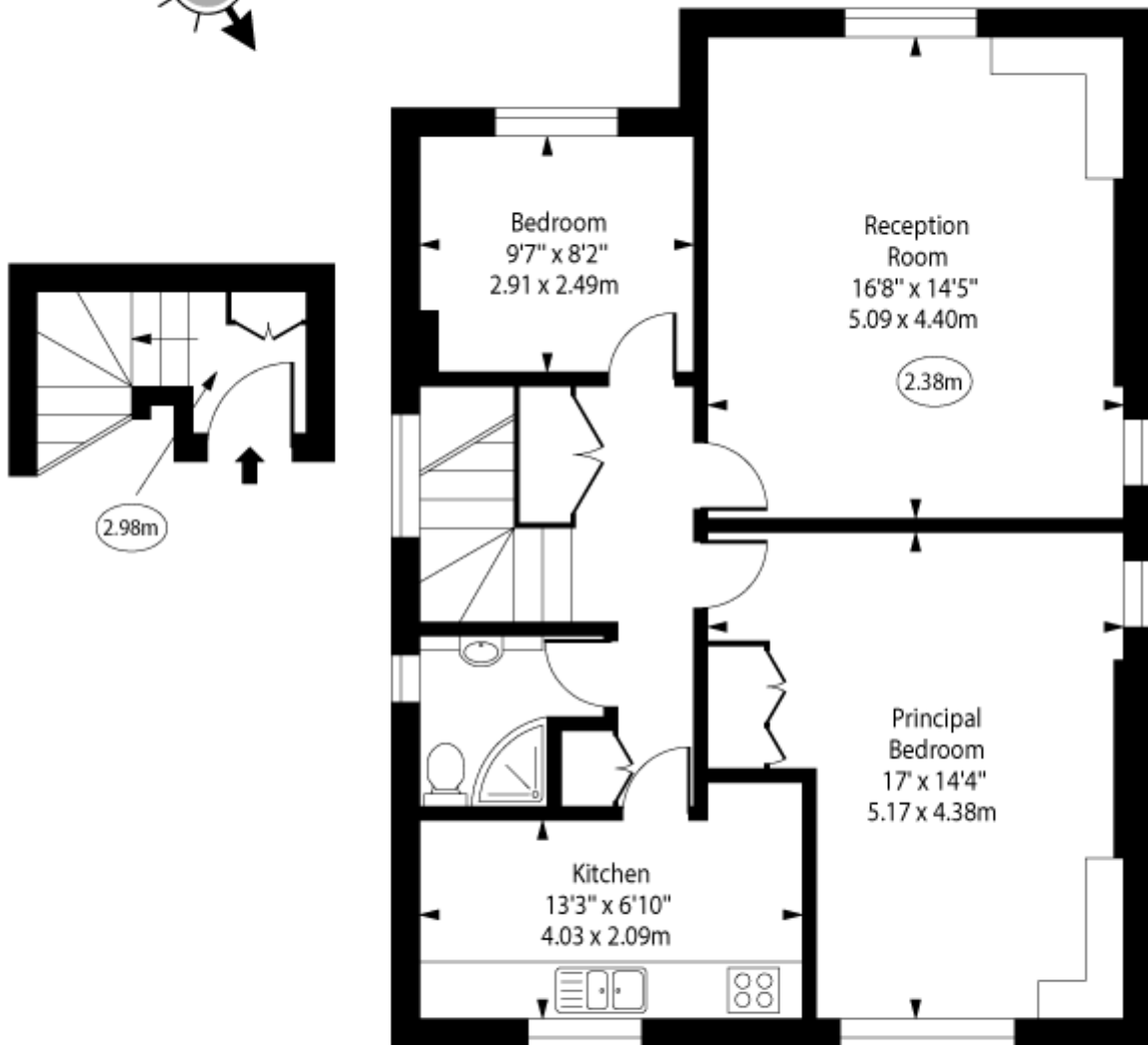
Chestertons Richmond Sales

23a Friars Stile Road
 Richmond
 Surrey
 TW10 6NH
 richmond@chestertons.co.uk
 020 3758 3222
 chestertons.co.uk

Onslow Road,
Richmond,
Surrey, TW10



○ - Ceiling Height



First Floor

Second Floor

Approx Gross Internal Area

845 Sq Ft - 78.50 Sq M

For Illustration Purposes Only - Not To Scale

www.goldlens.co.uk

Ref. No. 023154J

Chesterton Global Ltd trading as Chestertons for themselves and for the vendor of this property whose agents they are, give notice that (i) these particulars do not constitute any part of an offer or contract, (ii) all statements contained within these particulars are made without responsibility on the part of Chestertons or the vendor, (iii) whilst made in good faith, none of the statements contained within these particulars are to be relied upon as a statement or representation of fact, (iv) any intending purchasers must satisfy themselves by inspection or otherwise as to the correctness of each of the statements contained within these particulars, (v) the vendor does not make or give either Chestertons or any person in their employment any authority to make or give representation or warranty whatsoever in relation to this property. Wide angle lenses may be used. ©Copyright Chestertons | Chesterton Global Ltd | Registered Office 40 Connaught Street, Hyde Park, London W2 2AB Registered Company Number 05334580.



This paper is
100% recyclable