



Richmond Hill Court

Richmond, TW10

Offers in Excess of
£725,000

A two bedroom top floor apartment in a sought after mansion block on Richmond Hill.

This wonderful apartment has had a full refurbishment in the last couple of years. The apartment's internal accommodation now has a very modern feel and has been renovated to a very good standard, with fitted wardrobes in the bedroom and built in cabinets in the reception room. The ceiling has been modified to house mood lighting, which is a very nice addition for the evenings.

The property comprises of an entrance hallway with fitted storage, a spacious reception room offering lots of natural light, modern fitted kitchen, bathroom with separate WC and the two bedrooms are both with fitted wardrobes. This apartment benefits from a lift, communal tennis court, on-site porter and a private underground parking space.

Richmond Hill Court is well located for the amenities on Richmond Hill, with Richmond Park, Terrace Gardens, Richmond Riverside and Richmond town centre all being close by. Richmond train station offers access to and from London by tube or rail via the District line, South West trains and the London Overground service. Some of the area's best schools are also located close by, in particular the Vineyard Primary School, rated as 'Outstanding' in the latest Ofsted Report.

This property is being sold with no onward chain and is available to view by appointment only, via our Richmond branch of Chestertons.

CHESTERTONS



Richmond Hill Court

Richmond, TW10

- Private underground parking space
- Tennis court
- Lift and porter
- Convenient Richmond Hill location
- Some of the furniture shown in the images is computer generated



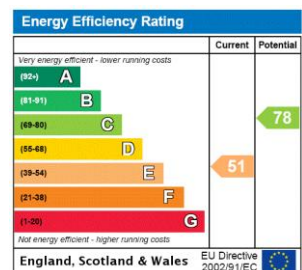
Tenure: Share of Freehold – lease expires 31st December 2984

Service Charge: £3664 pa payable in 2 x 6 monthly payments of £1832.00
 Parking space - £232.00pa, payable in 2 x 6 monthly payments of £116.00
 Reserve fund - £1362.00pa, payable in 2 x 6 monthly payments of £681.00
 Reserve fund for parking - £140.86pa, payable in 2 x 6 monthly payments of £70.43

Ground Rent: £45pa payable in 2 x 6 monthly payments of £22.50
 Ground rent for Parking space - £5.00pa, payable in 2 x 6 monthly payments of £2.50

Local Authority: London Borough Of Richmond Upon Thames

Council Tax Band: F



Chestertons Richmond Sales

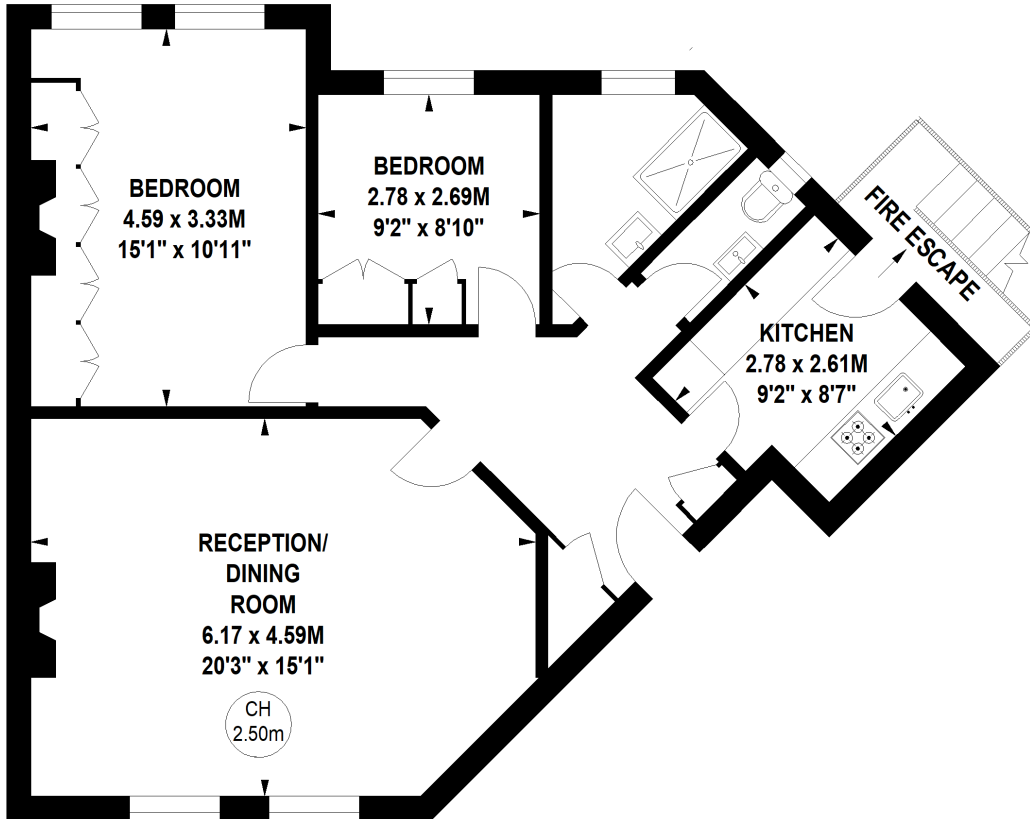
23a Friars Stile Road
 Richmond
 Surrey
 TW10 6NH
 richmond@chestertons.co.uk
 020 3758 3222
 chestertons.co.uk

Richmond Hill Court, TW10

Approximate gross internal area

76.83 sq m / 827 sq ft

Key :
CH - Ceiling Height



Fifth Floor

**Not to scale, for guidance only and must not be relied upon as a statement of fact.
All measurements and areas are approximate only**