



Erncroft Way

Twickenham, TW1

Asking Price £1,125,000

A spacious four bedroom semi-detached family home with large mature garden that benefits from a home office and garage, in a central Twickenham location.



Erncroft Way

Twickenham, TW1

- No onward chain
- Large mature garden
- Home office
- Side access
- Garage
- Two receptions

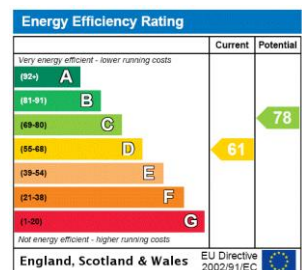


A spacious four bedroom semi-detached family home with large mature garden that benefits from a home office and garage. Set over three floors, this property is very well presented with a great layout.

The ground floor accommodation comprises of spacious living room with a large bay window, flooding in plenty of natural sunlight, open plan kitchen/ dining room and further sitting room to the rear with bi-fold doors leading out to the garden.

To the first floor, there are three bedrooms and a stylish family bathroom. The main bedroom is located on the top floor along with

Tenure: Freehold
Service Charge: £0
Ground Rent: £0
Local Authority: London Borough Of Richmond Upon Thames
Council Tax Band: F

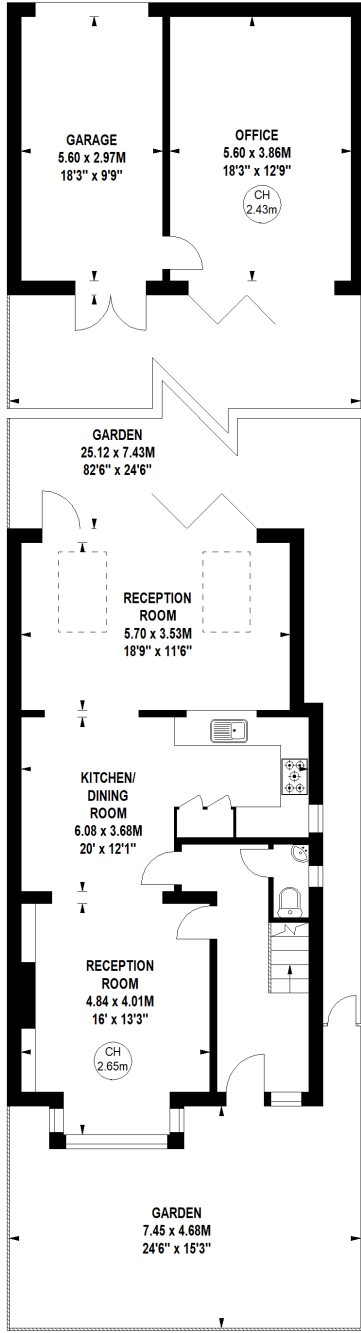


Chestertons Richmond Sales

23a Friars Stile Road
 Richmond
 Surrey
 TW10 6NH
 richmond@chestertons.co.uk
 020 3758 3222
 chestertons.co.uk

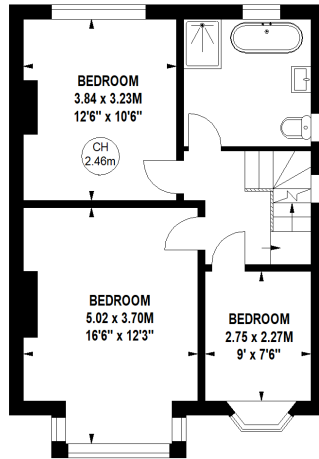
Erncroft Way, TW1

Approximate gross internal area
168.15 sq m / 1810 sq ft
 (Including Eaves Storage & Excluding Office Building)
 Eaves Storage 9.48 sq m / 102 sq ft
 Office Building 39.20 sq m / 422 sq ft

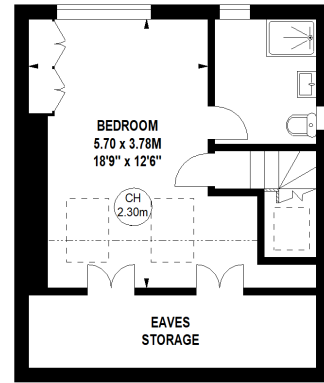


Ground Floor

Key :
 CH - Ceiling Height



First Floor



Second Floor

Not to scale, for guidance only and must not be relied upon as a statement of fact.
 All measurements and areas are approximate only

