



Kingswood Court

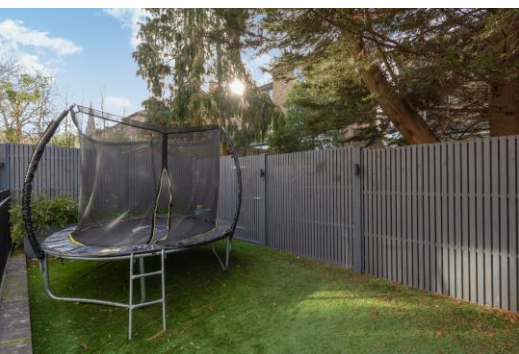
Marchmont Road, Richmond, TW10

£2,000,000 Asking Price
Freehold

This stunning four/five-bedroom modern home offers spacious accommodation over four floors with allocated parking for two cars and a pretty west-facing garden. Recently redecorated throughout, this modern property comprises on the ground-floor; a spacious hallway with study, a WC and large reception room with feature fireplace, the lower-ground features a stunning open-plan kitchen-living-dining room with a large kitchen island and access to the garden. The upper-floors feature four double bedrooms with fitted wardrobes and three bathrooms.

To the rear of the property is a pretty west-facing private garden with two terraces.

The property also benefits from secure allocated covered parking for two cars.



Kingswood Court

Marchmont Road, Richmond, TW10

- A stunning modern home, four-five bedrooms, three bathrooms and over 2,200 square feet
- Recently redecorated throughout
- West-facing garden
- Two allocated covered parking spaces
- Quiet yet convenient cul-de-sac location on Richmond Hill.



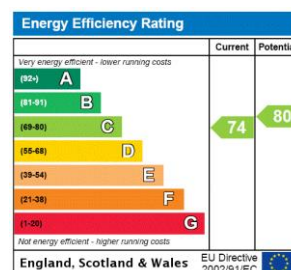
This property is located on the lower slopes of Richmond Hill between Richmond town centre and Richmond Hill village. Richmond Hill is a small community with a beautiful village at its heart, with the world famous Richmond Park on its doorstep. The village perfectly balances city and country living thanks to the spacious green spaces and easy London transport links. An ideal location for families, Richmond Hill has outstanding state and private school options, including The Vineyard, King's House, Old Vicarage and Marshgate Primary School to name a few.

You'll find everyday amenities such as dry cleaning, smaller supermarkets and coffee spots on your doorstep alongside a selection of pubs, cafes and restaurants. Local favourites include the Richmond Hill Bakery, The Marlborough pub and La Luna di Luca restaurant. Duck Pond Market, on the scenic riverside, sells ethically-sourced local food, art and crafts every weekend.

Richmond town centre offers a wider range of shops, from independent boutiques in cobbled lanes to leading High Street brands, along with a Whole Foods Market and large Waitrose supermarket.

Tenure: Freehold

Service Charge: £2300 per annum for the parking bays, communal areas, window cleaning




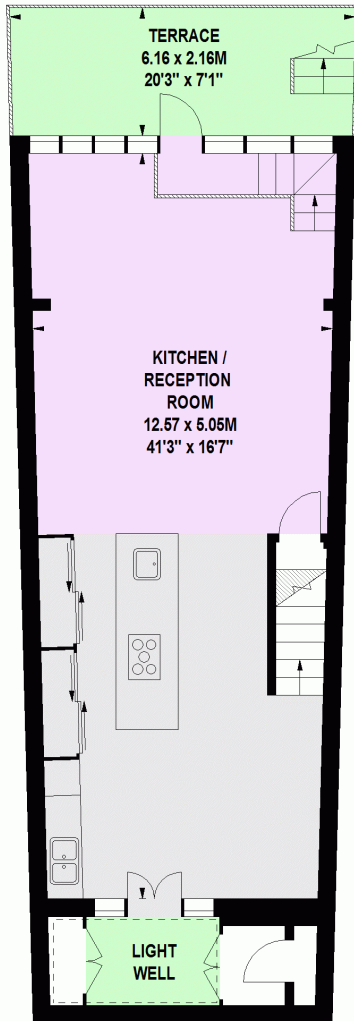
Chestertons Richmond Sales

23a Friars Stile Road
 Richmond
 Surrey
 TW10 6NH
sales.richmond@chestertons.com
 020 3758 3222
chestertons.com

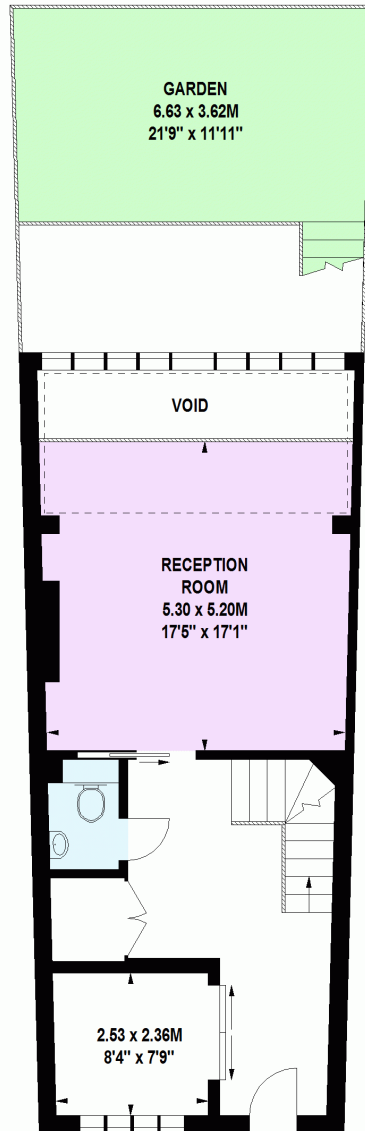
Kingswood Court, TW10

Approximate Gross Internal Area 205 sq m / 2207 sq ft

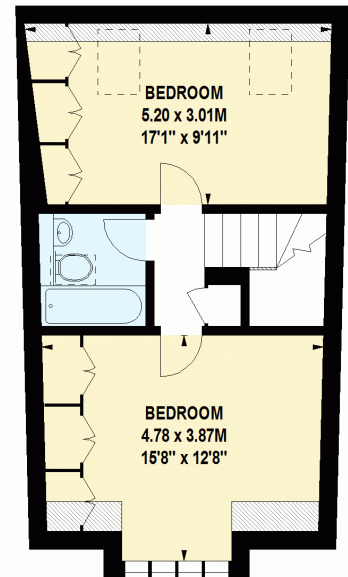
 Under 1.5m head height



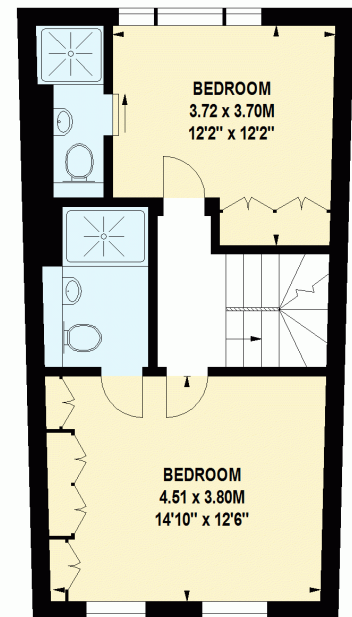
Lower Ground Floor



Ground Floor



Second Floor



First Floor

Floor Plan produced for Chestertons by Mays Floorplans © . Tel 020 3397 4594

Illustration for identification purposes only, not to scale

All measurements are maximum, and include wardrobes and window bays where applicable

