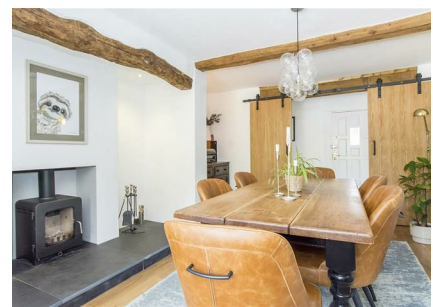


1 Church Walk, Swinford, LE17 6AY



£525,000

A unique opportunity has arisen to acquire this charming four double bedroom character home situated in the heart of the popular village of Swinford. This beautiful home has been lovingly cared for and improved to a very high standard by the current owners and offers flexible family living space set over three floors. The accommodation comprises: Entrance hall, sitting room, dining room that opens into a sun room, dining kitchen & utility, cloakroom and a flexible reception room with its own access. On the first floor there are two double bedrooms and a family bathroom with shower and on the second floor you will find two further double bedrooms. Outside there is a detached single garage and pretty walled rear gardens having views of the Church spire. Early viewing is advised to appreciate the quality and the space this home offers.

Service without compromise

Entrance Hall 12'08" x 3'03" (3.86m x 0.99m)



Step into this lovely home via a wooden door where the hall has mosaic tiled flooring. Oak internal doors give access to the ground floor accommodation.

Dining Kitchen 18" x 11'1" (5.49m x 3.38m)



The heart of the home is this generous dining kitchen which is fitted with a wide range of charcoal & grey cabinets with quartz surfaces. Undermounted slate sink with mixer taps. double built in oven & combination microwave. Five ring ceramic hob with extractor canopy. Integrated dishwasher and full height fridge. There is a window to the front aspect, porcelain tiled flooring and a solid oak staircase with glass balustrade rises to the first floor accommodation.

Dining kitchen Photo Two



Utility Room 5'8" x 13'10" (1.73m x 4.22m)



Fitted with storage cabinets and quartz surfaces. Integrated full height freezer and washing machine. Vertical radiator and porcelain floor tiles. A set of French doors lead to the garden.

Cloakroom 5'07" x 4'09" (1.70m x 1.45m)



Fitted with a low flush WC, wash hand basin set onto a unique drawer unit. Ceramic wall tiles and porcelain floor tiles. Opaque window to the rear aspect. Floor mounted oil central heating boiler.

Sitting Room 17' x 14'6" (5.18m x 4.42m)



This spacious lounge has dual aspect windows allowing lots of natural light flood in. Vertical radiator and engineered oak flooring.

Dining Room 13'8" x 12'9" (4.17m x 3.89m)



The perfect room to entertain friends and family this lovely dining room has oak sliding doors and an inglenook fireplace housing a wood burning stove. Engineered oak flooring and a radiator. Steps lead up to the sunroom.

Sun Room 11'11" x 5'10" (3.63m x 1.78m)



Opening from the dining room this sun room has a set of French doors that open into the garden. Engineered oak flooring and a radiator.

Gym / Bedroom Five 17' x 12' (5.18m x 3.66m)



This flexible room has a window to the front aspect and its own side access door. There is plumbing and space for a washing machine, quarry tiled flooring and a stainless steel sink unit. This living space could be used as a bedroom five, laundry room or to run a business from.

First Floor Landing



This light and airy landing has two built in double storage cupboards and a window to the front aspect and a radiator. The loft is boarded with light connected and is accessed via a pull down ladder. Oak internal doors give access to two double bedrooms and the family bathroom.

Bedroom One 17'5" x 14'10" (5.31m x 4.52m)



This king-sized bedroom has dual aspect windows . A storage cupboard. Exposed timber ceiling beams and a radiator.

Bedroom One Picture Two



Service without compromise

Bedroom Two 12'5" x 13'5" (3.79m x 4.09m)



A double bedroom with a window to the rear aspect. Stripped floorboards and a radiator.

Bathroom 10'9" x 11' (max) x 7'10" (min) (3.28m x 3.35m(max) x 2.39m (min))



The spacious family bathroom is fitted with a low flush WC. Square hand wash basin set onto a bespoke cupboard. A large walk-in shower with glass screen. Bath with central taps. Ceramic wall and floor tiles. Opaque window to the rear aspect.

Bathroom Photo Two



Second Floor Landing 6' x 11'10" (1.83m x 3.61m)



A large storage cupboard. Exposed ceiling timber beam. Oak internal doors give access to two double bedrooms. Access to the insulated loft.

Bedroom Three 16'3" x 12'6" (4.97m x 3.82m)



A double bedroom with with a window to the rear aspect. Bespoke under eaves storage cupboards. Exposed ceiling timber beams. Radiator. This room is currently being used as a work from home office.

Bedroom Four 12' x 16' (3.66m x 4.88m)



A double bedroom with a window to the side aspect. Exposed ceiling timber beams. Radiator.

Garden



The beautiful walled garden has views over the church spire, timber decked seating areas with pretty raised borders retained by sleepers which are stocked with many shrubs and plants providing all year interest. There is a sizeable garden shed and gates to the side and front of the property.

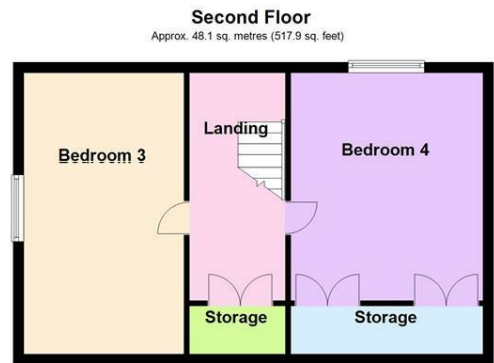
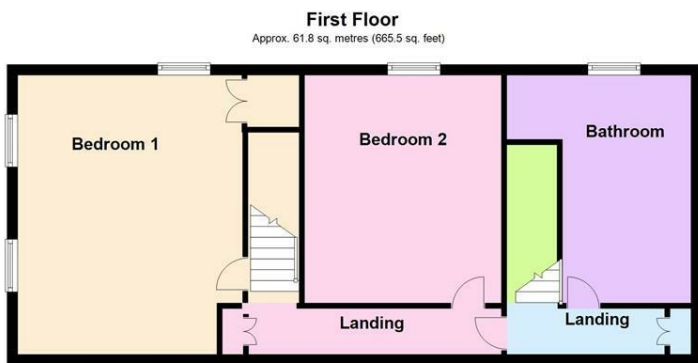
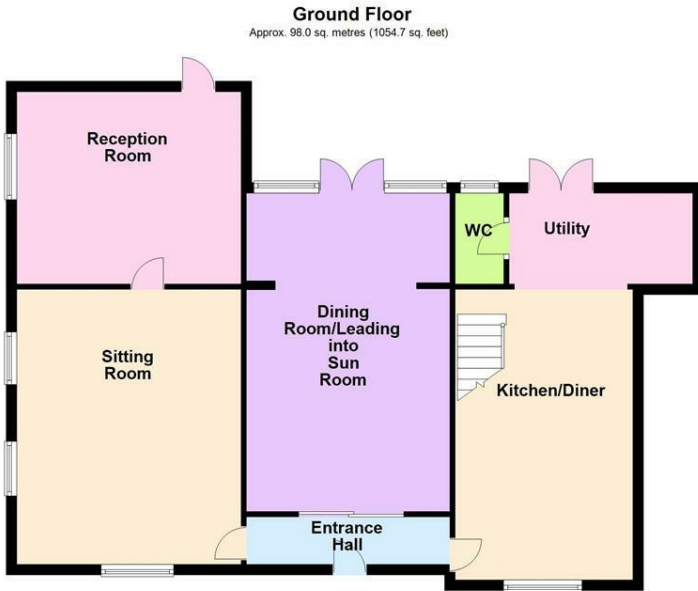
Garden Photo two



Garage 19' x 11'00 (5.79m x 3.35m)

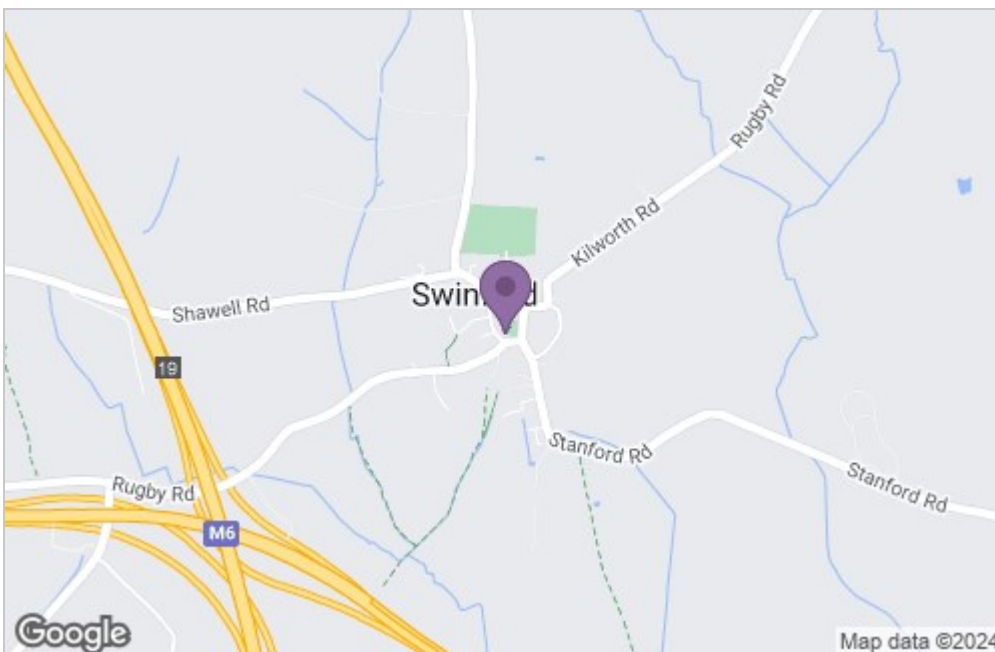
The detached garage has a pitched felted roof with a mezzanine level which provides extra storage. Power and light is connected. Up and over door to the front and a personal door to the side.

Floor Plan

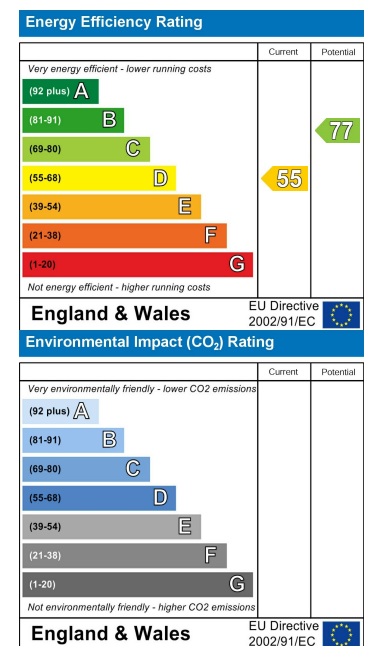


Total area: approx. 207.9 sq. metres (2238.1 sq. feet)

Area Map



Energy Efficiency Graph



Service without compromise