



80 HAILGATE HOWDEN, DN14 7ST

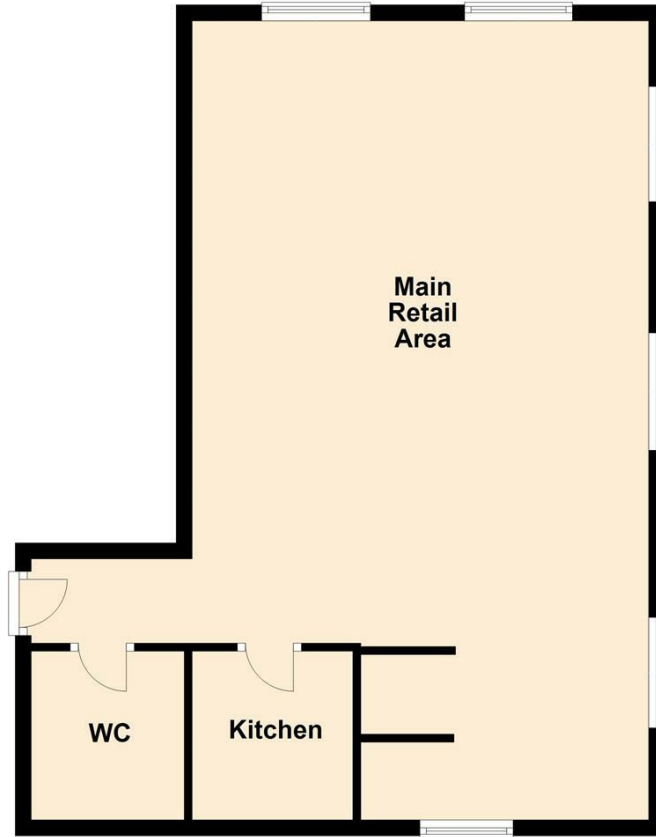
£9,000 PER ANNUM


These prime first floor commercial premises extend of approximately 665 sq ft and comprise main retail area together with a Kitchenette and Cloakroom. This prime town centre development is situated on the edge of the busy market place within the picturesque and thriving market town of Howden. The development houses two ground floor retail units and three first floor retail/office units.

EPC:



Ground Floor



Energy Efficiency Rating		
	Current	Potential
<i>Very energy efficient - lower running costs</i>		
(92 plus) A		
(81-91) B		
(69-80) C		
(55-68) D		
(39-54) E		
(21-38) F		
(1-20) G		
<i>Not energy efficient - higher running costs</i>		
England & Wales	EU Directive 2002/91/EC 	

Agents Note: Whilst every care has been taken to prepare these particulars, they are for guidance purposes only. All measurements are approximate and are for general guidance purposes only and whilst every care has been taken to ensure their accuracy, they should not be relied upon and potential buyers/tenants are advised to recheck the measurements

Thorne Commercial
94 King Street
Thorne
Doncaster
South Yorkshire
DN8 5BA

01405 816893
thorne@screetons.co.uk
www.screetons.co.uk

