

LEASEHOLD



Apartment

STANDON MILL, KENTS LANE, STANDON, HERTFORDSHIRE, SG11

Guide Price

£315,000

FEATURES

- Chain Free
- Top Floor Loft Style One Bedroom Apartment
- Almost 750 SQ FT
- Gas Central Heating
- Award Winning Victorian Flour Mill Conversion
- High Ceilings & Dual Aspect
- Allocated Car Port
- 150 + Year Lease



Kents Lane Standon SG11 1PT

It's elevated position, dual aspect design and soaring ceilings create a light-filled home with a wonderful sense of space and character.

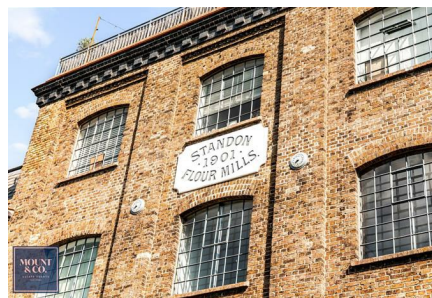
The open-plan living, kitchen and dining area is finished to an excellent standard featuring a breakfast bar and high-quality integrated appliances. The superb dual-aspect bedroom enjoys generous proportions and a walk in wardrobe, while the sleek modern bathroom and spacious entrance hall further enhance the home's appeal.

The development itself makes a striking impression, with a luxurious communal entrance showcasing exposed brickwork, an oak staircase, lift access and secure entry system double glass doors. Outside, the beautifully landscaped communal gardens overlook the tranquil River Rib providing an idyllic setting for relaxation.

With over 150 years remaining on the lease, gas central heating, allocated car port, visitors parking and no onward chain.

The property is within walking distance to Standon High Street and easily accessible to nearby towns including Hertford, Ware & Bishops Stortford, with excellent transport links to the A10 and a choice of train stations.

A unique opportunity to own a piece of Hertfordshire's heritage - contact Mount & Co to arrange your private viewing.



MOUNT & CO | 2 MARKET PLACE, HERTFORD, HERTFORDSHIRE, SG14 1DF



MOUNT & CO | 2 MARKET PLACE, HERTFORD, HERTFORDSHIRE, SG14 1DF



MOUNT & CO | 2 MARKET PLACE, HERTFORD, HERTFORDSHIRE, SG14 1DF

Call us on

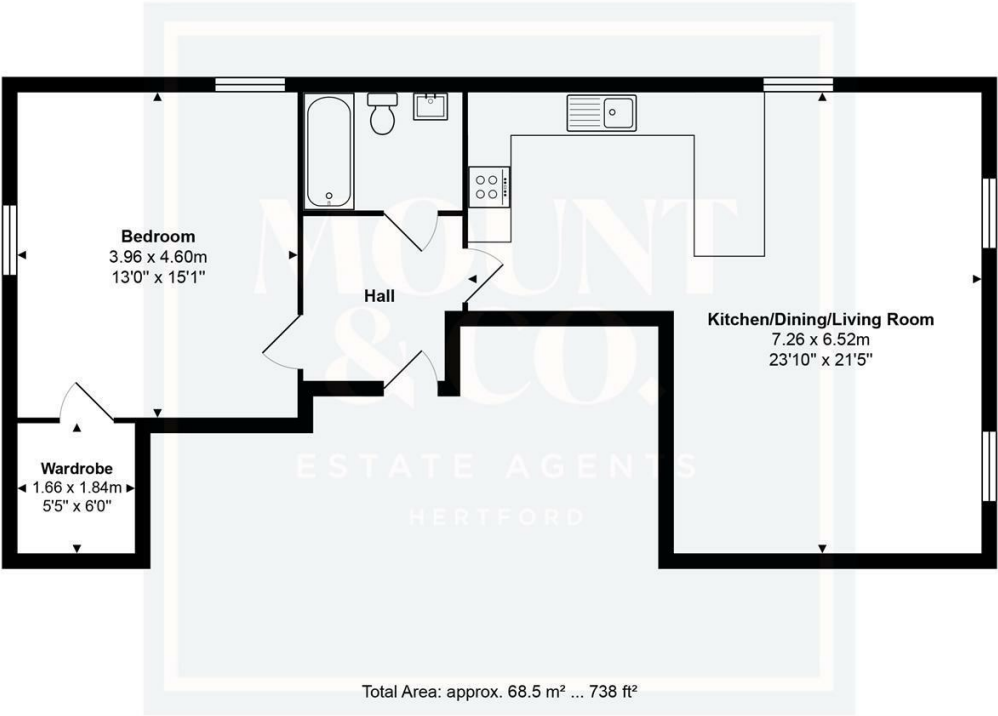
01992 937 011

hello@mountandco.co.uk

https://www.mountandco.co.uk/

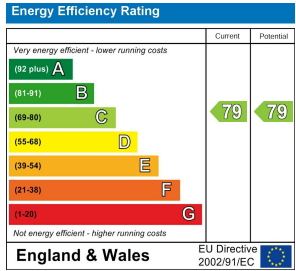
Council Tax Band

D



THE FLOORPLAN IS FOR ILLUSTRATIVE PURPOSES ONLY AND IS NOT TO SCALE.
Measurements and features are approximate and may differ from the actual property. Verify all details independently; no liability is accepted for errors or omissions.

Property marketing provided by www.fotomarketing.co.uk



Agents Note: Whilst every care has been taken to prepare these particulars, they are for guidance purposes only. All measurements are approximate and are for general guidance purposes only and whilst every care has been taken to ensure their accuracy, they should not be relied upon and potential buyers are advised to recheck the measurements.