

LEASEHOLD



Apartment

SMEATON COURT, HERTFORD, HERTFORDSHIRE, SG13

Guide Price

£265,000

FEATURES

- Well-Presented One Bedroom Apartment
- Excellent Condition
- 115 Year Lease
- Walking Distance To Hertford East BR, Hertford Town Centre & Hartham Common
- Ground Floor
- Secure Underground Allocated Parking
- Gas Central Heating
- Luxury Bathroom Suite



Smeaton Court Hertford SG13 7AU

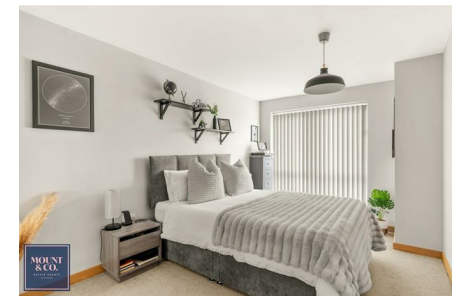
The property comprises of entrance hall, open plan lounge/kitchen/diner, excellent size bedroom with built-in wardrobes and a luxury bathroom.

Further benefits include secure underground allocated parking, gas central heating and a long lease of approximately 115 years.

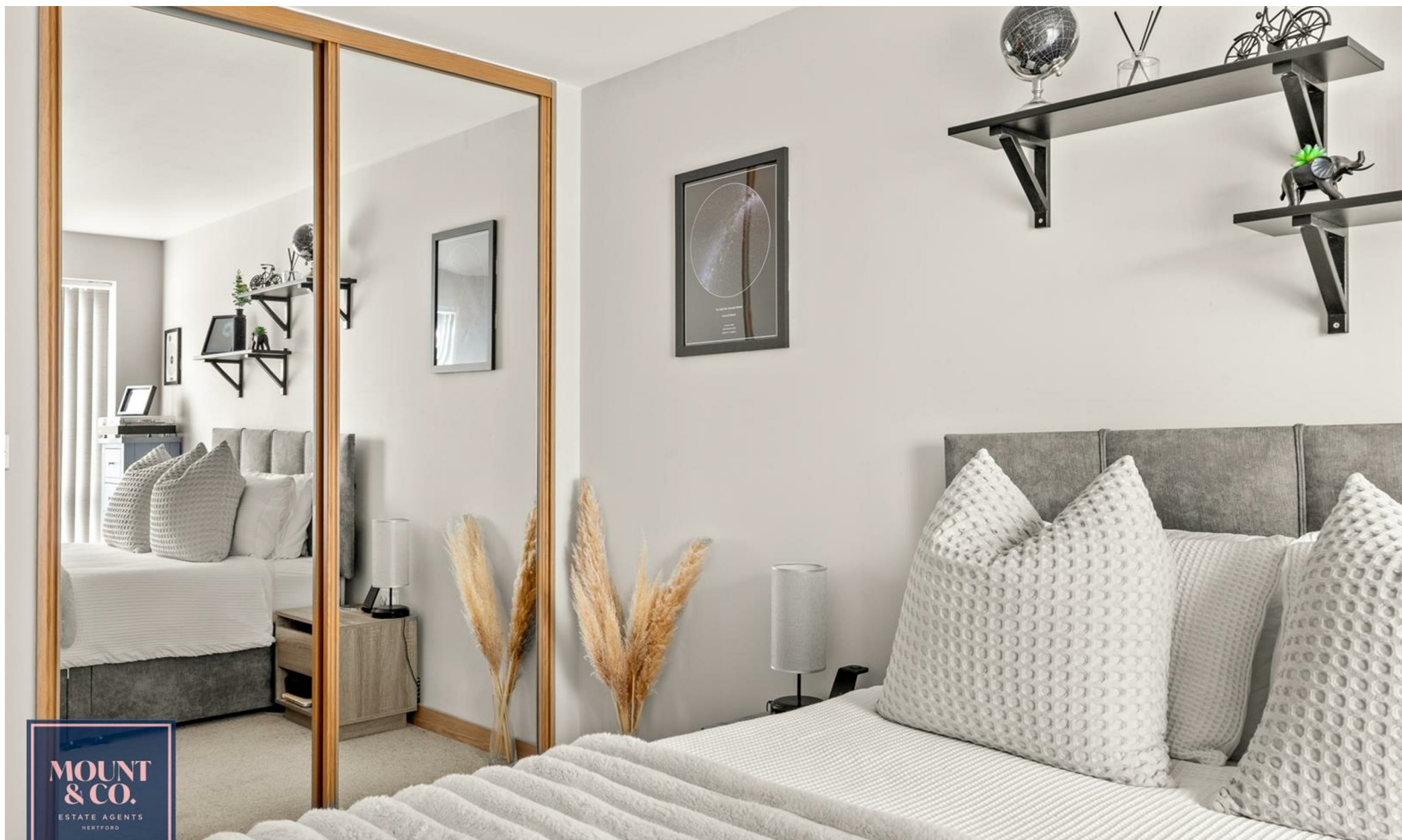
Smeaton Court is located along the River Lea and provides quick and easy access to Hertford East mainline train station and Hertford Town Centre.

Please call now to arrange a viewing.

ACCOMMODATION:



MOUNT & CO | 2 MARKET PLACE, HERTFORD, HERTFORDSHIRE, SG14 1DF



MOUNT & CO | 2 MARKET PLACE, HERTFORD, HERTFORDSHIRE, SG14 1DF



MOUNT & CO | 2 MARKET PLACE, HERTFORD, HERTFORDSHIRE, SG14 1DF

Call us on

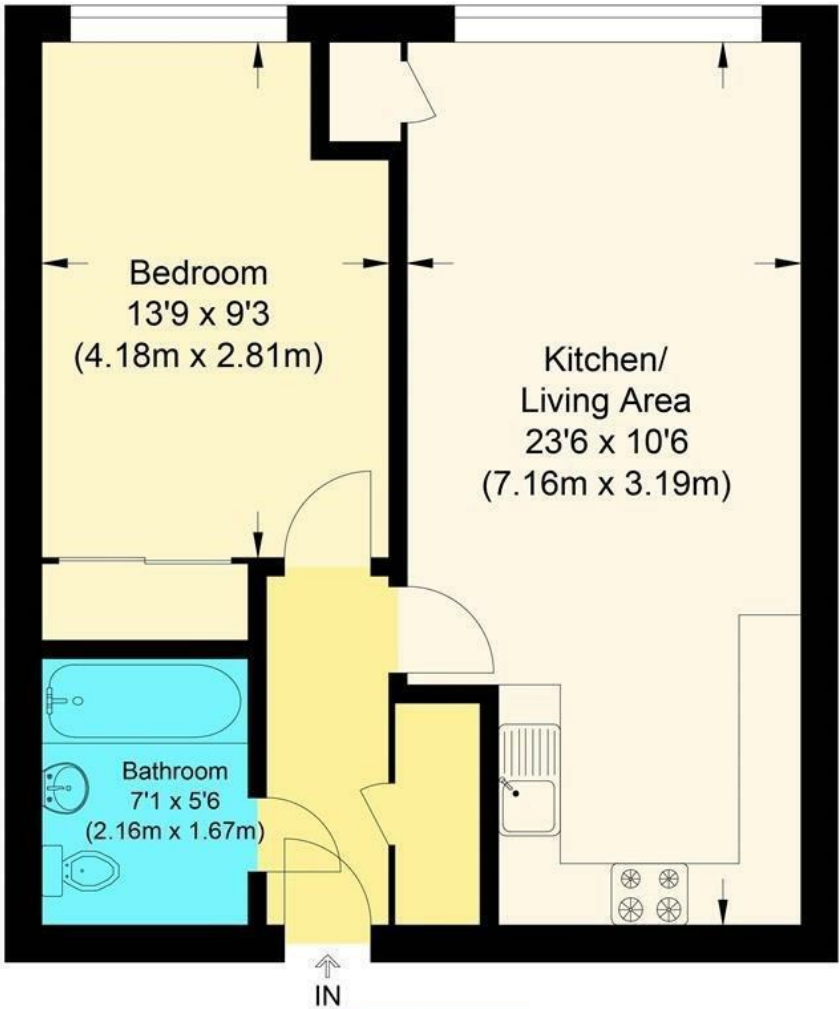
01992 937 011

hello@mountandco.co.uk

<https://www.mountandco.co.uk/>

Council Tax Band

C



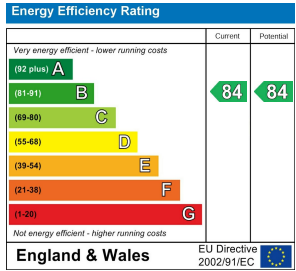
Ground Floor



Smeaton Court

Approximate Gross Internal Floor Area : 44.0 sq m / 473.61 sq ft

Illustration for identification purposes only, measurements are approximate, not to scale.



Agents Note: Whilst every care has been taken to prepare these particulars, they are for guidance purposes only. All measurements are approximate and are for general guidance purposes only and whilst every care has been taken to ensure their accuracy, they should not be relied upon and potential buyers are advised to recheck the measurements.