

LEASEHOLD



Apartment

WILLOW VIEW, CRANE MEAD, WARE, HERTFORDSHIRE, SG12

Guide Price

£320,000

FEATURES

- Two Bedroom Top Floor Apartment
- Walking Distance To Ware Train Station
- Allocated Parking
- Chain Free
- Riverside Development
- En-suite To Master
- Direct Views Of Communal Garden & River
View From All Windows
- Council Tax Band - D



Willow View Ware SG12 9FJ

Being on the top floor, this apartment offers bundles of natural light throughout and offers amazing views from all rooms.

The property comprises entrance hall, lounge/diner with Juliet balcony, fitted kitchen, two bedrooms, ensuite to the principle bedroom and a family bathroom.

The property has allocated parking and is located within walking distance to both Ware train station and the town centre.

Please call now to arrange a viewing.



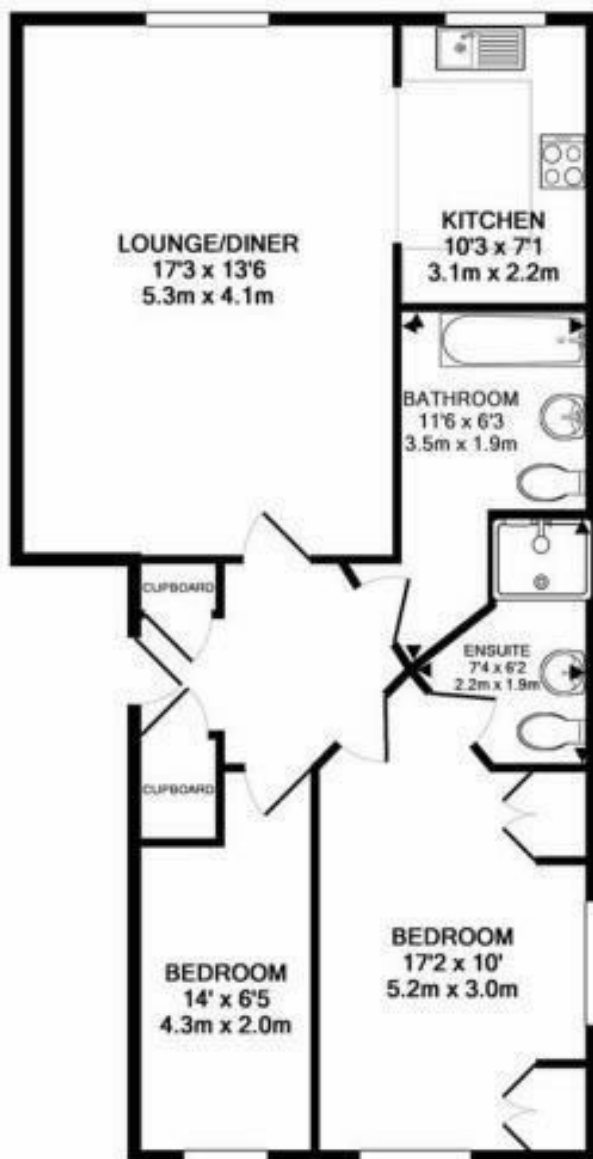
HERTFORD LETTINGS | 2 MARKET PLACE, HERTFORD, HERTFORDSHIRE, SG14 1DF



HERTFORD LETTINGS | 2 MARKET PLACE, HERTFORD, HERTFORDSHIRE, SG14 1DF



HERTFORD LETTINGS | 2 MARKET PLACE, HERTFORD, HERTFORDSHIRE, SG14 1DF



TOTAL APPROX. FLOOR AREA 756 SQ.FT. (70.2 SQ.M.)

Whilst every attempt has been made to ensure the accuracy of the floor plan contained here, measurements of doors, windows, rooms and any other items are approximate and no responsibility is taken for any error, omission, or mis-statement. This plan is for illustrative purposes only and should be used as such by any prospective purchaser. The services, systems and appliances shown have not been tested and no guarantee as to their operability or efficiency can be given.
Made with Metropix ©2017

Call us on

0199 253 2222

info@abelestateagent.co.uk

www.abelestateagent.co.uk

Council Tax Band

D

Energy Efficiency Rating		
	Current	Potential
Very energy efficient - lower running costs		
(92 plus) A		
(81-91) B		
(69-80) C		
(55-68) D		
(39-54) E		
(21-38) F		
(1-20) G		
Not energy efficient - higher running costs		
England & Wales	EU Directive 2002/91/EC	

Agents Note: Whilst every care has been taken to prepare these particulars, they are for guidance purposes only. All measurements are approximate and are for general guidance purposes only and whilst every care has been taken to ensure their accuracy, they should not be relied upon and potential buyers are advised to recheck the measurements.

