



LEASEHOLD

House - Terraced

RIVER COURT, CROUCHFIELD, CHAPMORE END, WARE, SG12

Offers In Excess Of
£350,000

FEATURES

- Chain Free
- Large Communal Parking
- Within Two Miles Of Hertford & Ware Town Centre
- Peaceful Countryside Setting
- Beautifully-Presented Two Bedroom Home
- Modern Fitted Kitchen
- Private Landscaped Rear Garden
- 950 Year Lease

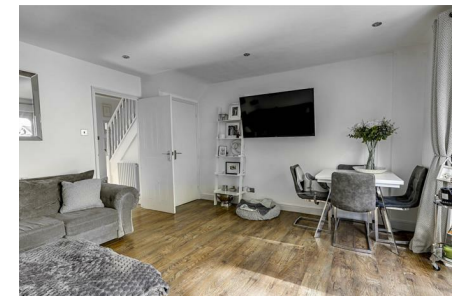
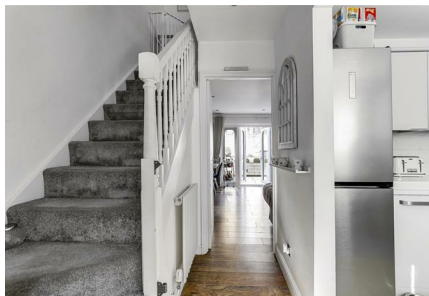


River Court Chapmore End SG12 0QY

The property is arranged over two floors and features entrance hall, high specification kitchen, lounge/diner with patio doors leading out to the private garden, two double bedrooms and a modern family bathroom.

River Court forms part of this semi rural development, situated in between Ware and Hertford, away from the hustle and bustle yet close enough to enjoy the plethora of amenities and train stations that each have to offer including 3 train stations to choose from, as well as the A10, you are well connected yet in this picturesque setting.

This property is expected to attract a high level of interest, so please call now to arrange a viewing.



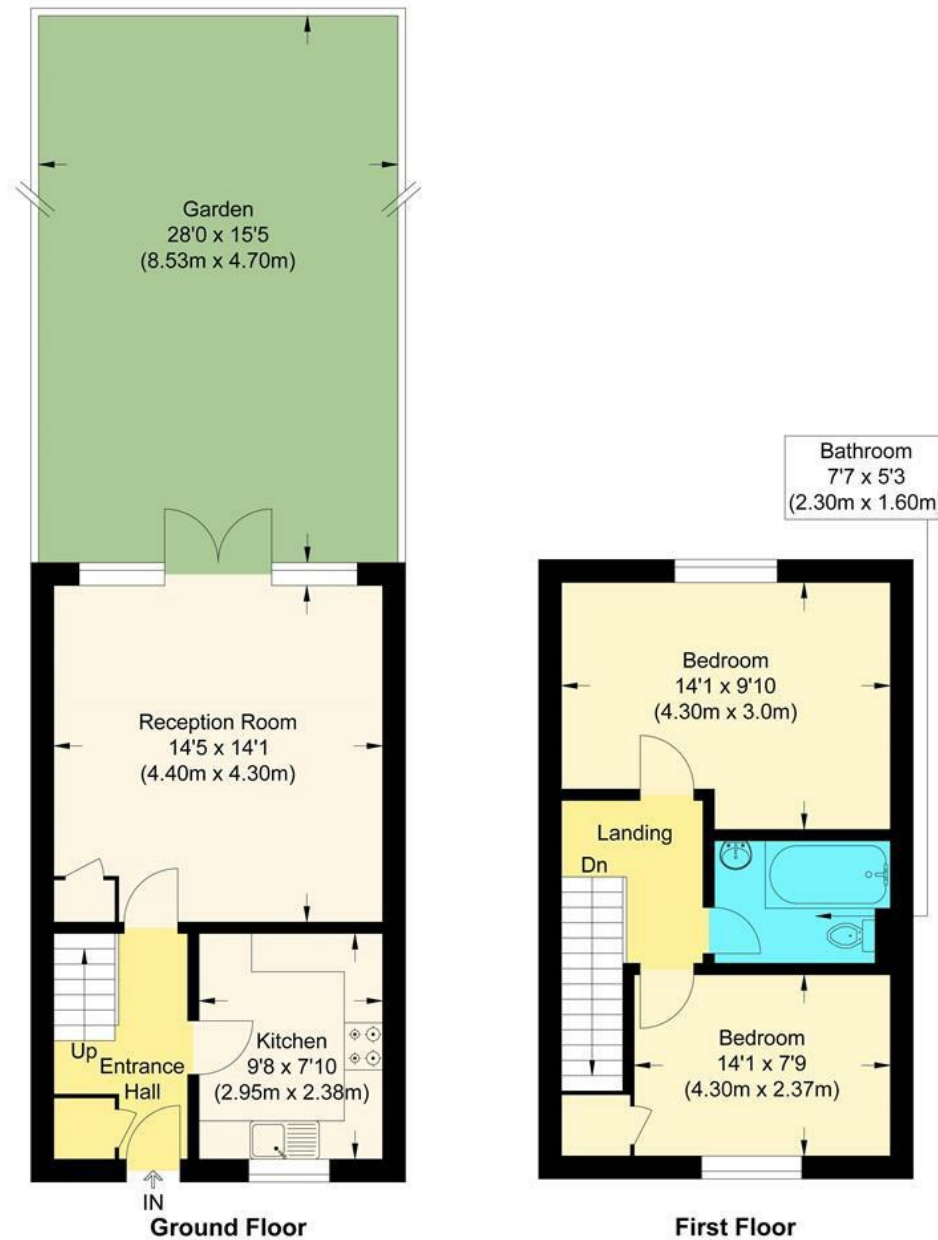
HERTFORD SALES | 2 MARKET PLACE, HERTFORD, HERTFORDSHIRE, SG14 1DF



HERTFORD SALES | 2 MARKET PLACE, HERTFORD, HERTFORDSHIRE, SG14 1DF



HERTFORD SALES | 2 MARKET PLACE, HERTFORD, HERTFORDSHIRE, SG14 1DF



River Court

Approximate Gross Internal Floor Area : 64.50 sq m / 694.27 sq ft

Illustration for identification purposes only, measurements are approximate, not to scale.

Call us on

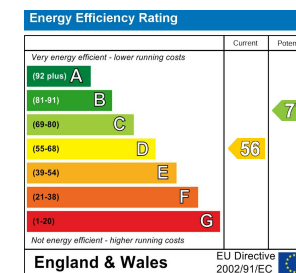
0199 253 2222

info@abelestateagent.co.uk

www.abelestateagent.co.uk

Council Tax Band

D



Agents Note: Whilst every care has been taken to prepare these particulars, they are for guidance purposes only. All measurements are approximate and are for general guidance purposes only and whilst every care has been taken to ensure their accuracy, they should not be relied upon and potential buyers are advised to recheck the measurements.

