

LEASEHOLD



Apartment

5 MATISSE HOUSE, MAIDENHEAD STREET, HERTFORD, SG14 1DW

Guide Price

£190,000

FEATURES

- Chain Free
- Gas Central Heating
- Modern Fitted Kitchen
- Close To Hertford East & North Train Station
- One Bedroom Top Floor Apartment
- Shower Room
- Located Within The Heart Of Hertford
- Long Lease



1 Bedroom Apartment located in Hertford

Located within the heart of Hertford town centre is this one bedroom top floor apartment offered with no onward chain.

Call us on

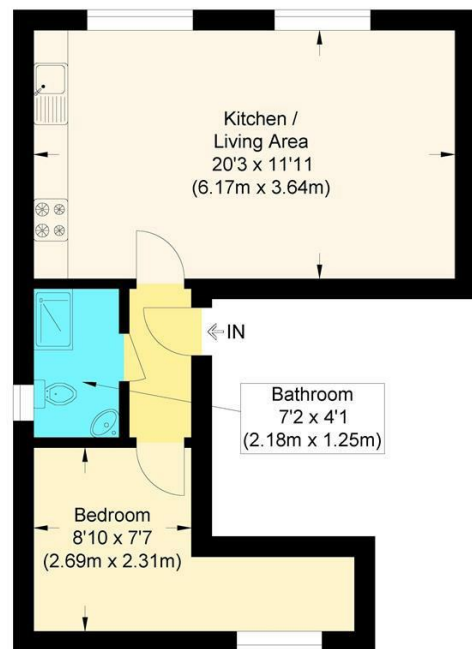
0199 253 2222

info@abelestateagent.co.uk

www.abelestateagent.co.uk

Council Tax Band

C



Second Floor

Matisse House

Approximate Gross Internal Floor Area : 37.0 sq m / 398.26 sq ft

Illustration for identification purposes only, measurements are approximate, not to scale.

Energy Efficiency Rating		
	Current	Potential
Very energy efficient - lower running costs		
(92 plus) A		
(81-91) B		
(69-80) C	72	77
(55-68) D		
(39-54) E		
(21-38) F		
(1-20) G		
Not energy efficient - higher running costs		
England & Wales		
	EU Directive 2002/91/EC	

Agents Note: Whilst every care has been taken to prepare these particulars, they are for guidance purposes only. All measurements are approximate and are for general guidance purposes only and whilst every care has been taken to ensure their accuracy, they should not be relied upon and potential buyers are advised to recheck the measurements.

