

LEASEHOLD



Maisonette

57 TUDOR CLOSE, HATFIELD, AL10 9EJ

Guide Price

£230,000

FEATURES

- Generous Size One Bedroom Ground Floor Maisonette
- Own Front Door
- Communal Garden
- Allocated Parking
- Close To University Of Hertfordshire
- Chain Free
- Ideal Investment Or First Time Purchase
- Double Glazing



Tudor Close Hatfield AL10 9EJ

The lease has 88 years remaining and the seller has advised that the lease can easily be extended to 999 years with no premium charge.

This property is a really generous sized one bedroom which can easily be used as a two bedroom.

Please call now to arrange a viewing.



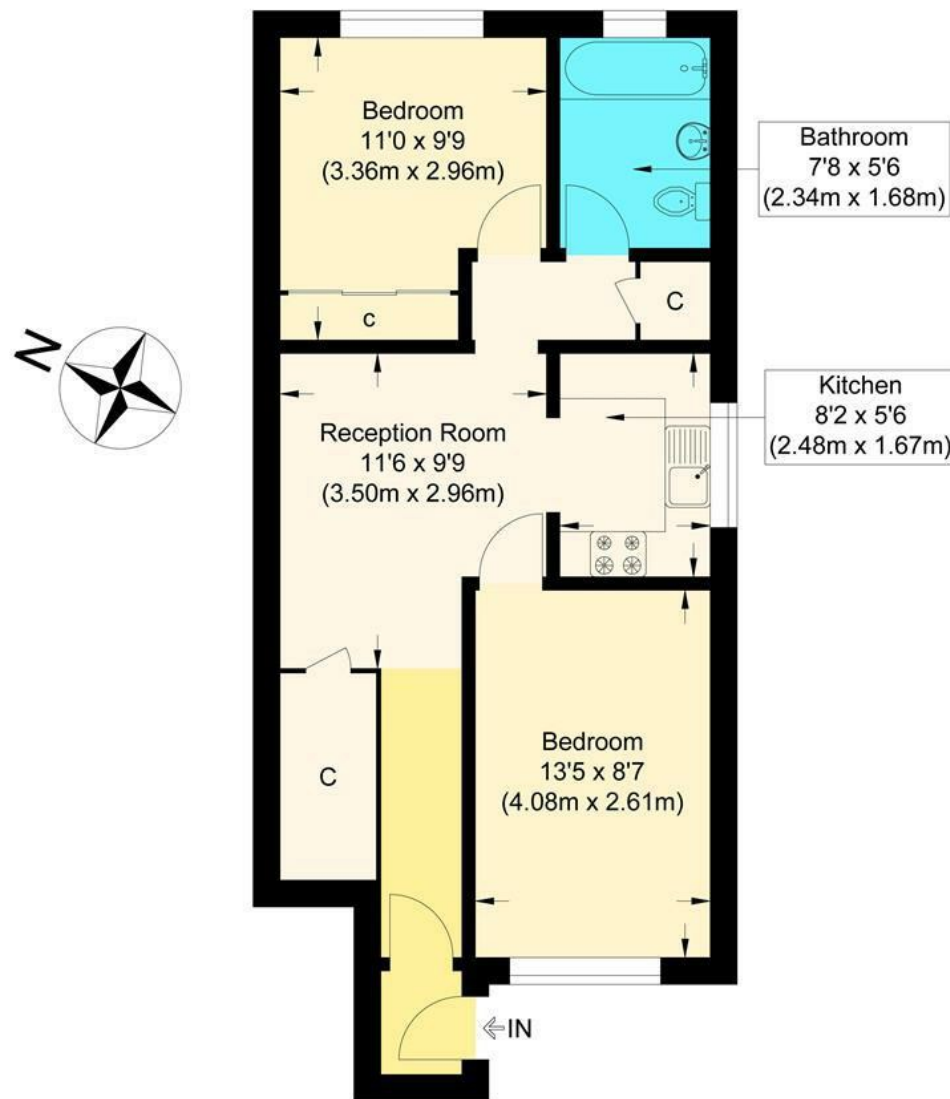
MOUNT & CO | 2 MARKET PLACE, HERTFORD, HERTFORDSHIRE, SG14 1DF



MOUNT & CO | 2 MARKET PLACE, HERTFORD, HERTFORDSHIRE, SG14 1DF



MOUNT & CO | 2 MARKET PLACE, HERTFORD, HERTFORDSHIRE, SG14 1DF



Ground Floor

Tudor Close

Approximate Gross Internal Floor Area : 49.10 sq m / 528.50 sq ft
 Illustration for identification purposes only, measurements are approximate, not to scale.

Call us on

01992 937 011

hello@mountandco.co.uk

<https://www.mountandco.co.uk/>

Council Tax Band

C

Energy Efficiency Rating		
	Current	Potential
Very energy efficient - lower running costs		
(92 plus) A		
(81-91) B		
(69-80) C		76
(55-68) D	61	
(39-54) E		
(21-38) F		
(1-20) G		
Not energy efficient - higher running costs		
England & Wales		EU Directive 2002/91/EC

Agents Note: Whilst every care has been taken to prepare these particulars, they are for guidance purposes only. All measurements are approximate and are for general guidance purposes only and whilst every care has been taken to ensure their accuracy, they should not be relied upon and potential buyers are advised to recheck the measurements.

