

LEASEHOLD



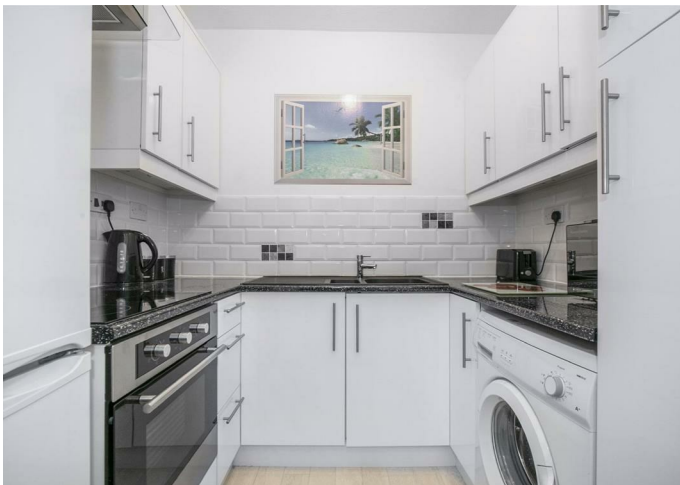
Apartment

18 PALMER COURT, CHAPMORE END, WARE, SG12 0PR

Offers In Excess Of
£110,000

FEATURES

- Private Front Door
- Peaceful Semi-Rural Location
- Great First Time Purchase Or Investment
- Low Lease - 61 Years
- Ground Floor Maisonette
- Chain Free
- Close to Ware and Hertford Train Stations



1 Bedroom Apartment located in Ware

CHAIN FREE - Perfectly placed in this private cul de sac development in Chapmore End, is this one bedroom ground floor maisonette with PRIVATE FRONT DOOR.

Call us on

0199 253 2222

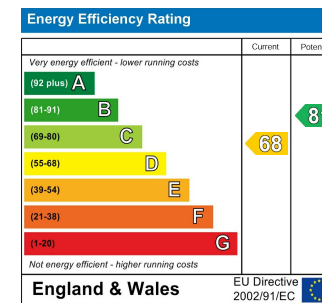
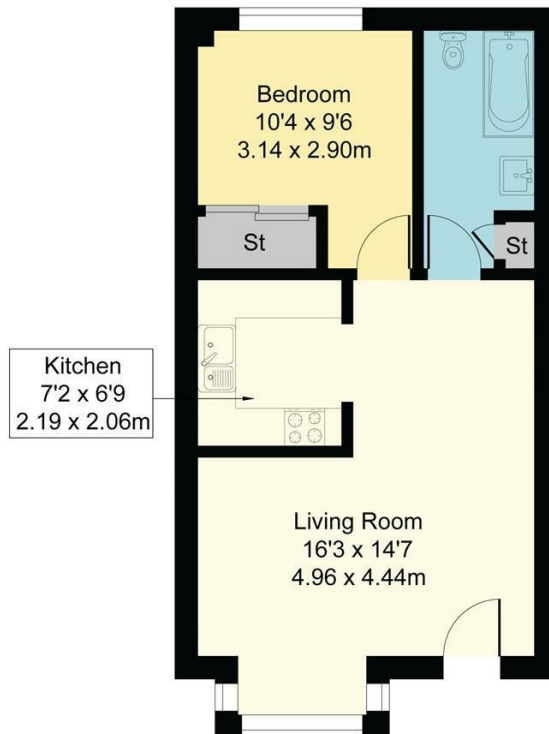
info@abelestateagent.co.uk

www.abelestateagent.co.uk

Council Tax Band

D

Approximate Gross Internal Area
408 sq ft - 38 sq m



Agents Note: Whilst every care has been taken to prepare these particulars, they are for guidance purposes only. All measurements are approximate and are for general guidance purposes only and whilst every care has been taken to ensure their accuracy, they should not be relied upon and potential buyers are advised to recheck the measurements.