

LEASEHOLD



Apartment

135 SMEATON COURT, HERTFORD, SG13 7AU

Guide Price

£325,000

FEATURES

- TWO DOUBLE BEDROOMS
- LONG LEASE
- UNDERGROUND ALLOCATED PARKING
- INTEGRATED APPLIANCES
- FIRST FLOOR APARTMENT
- LIFT ACCESS
- GAS CENTRAL HEATING
- TWO LUXURY BATHROOMS



2 Bedroom Apartment located in Hertford

EXECUTIVE STYLE DEVELOPMENT in a fantastic riverside location short walk to Hertford East Station. Beautifully maintained throughout. TWO BATHROOMS, two double bedrooms. Parking and Lift. KEYS HELD

Call us on

0199 253 2222

info@abelestateagent.co.uk

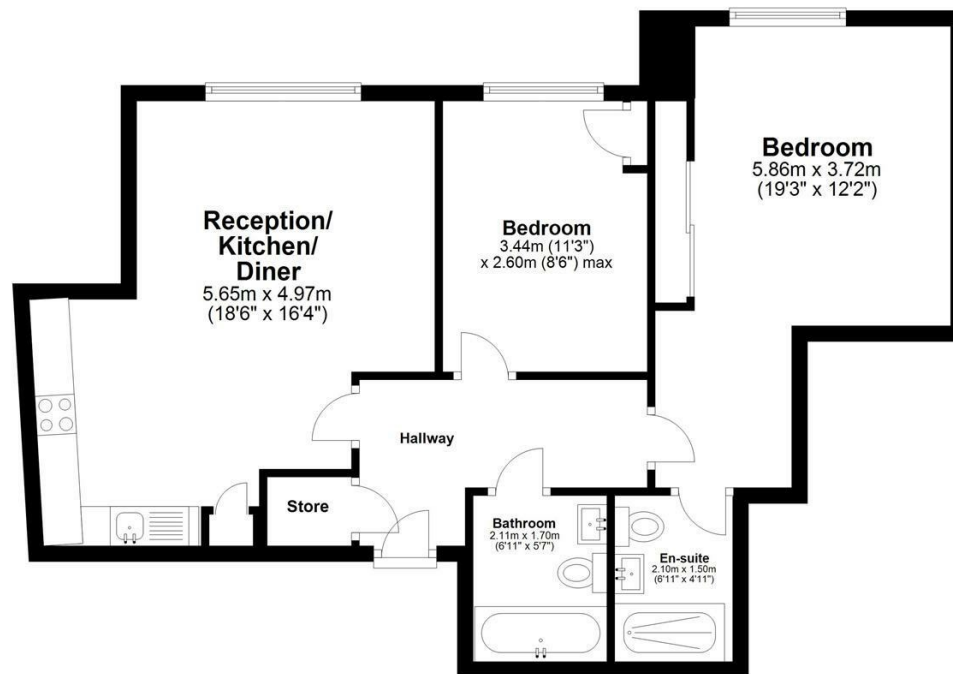
www.abelestateagent.co.uk

Council Tax Band

B

First Floor

Approx. 64.4 sq. metres (692.8 sq. feet)



Total area: approx. 64.4 sq. metres (692.8 sq. feet)
Smeaton Court

Energy Efficiency Rating		Current	Potential
<i>Very energy efficient - lower running costs</i>			
(92 plus) A			
(81-91) B		83	84
(69-80) C			
(55-68) D			
(39-54) E			
(21-38) F			
(1-20) G			
<i>Not energy efficient - higher running costs</i>			
England & Wales		EU Directive 2002/91/EC	

Agents Note: Whilst every care has been taken to prepare these particulars, they are for guidance purposes only. All measurements are approximate and are for general guidance purposes only and whilst every care has been taken to ensure their accuracy, they should not be relied upon and potential buyers are advised to recheck the measurements.

