

LEASEHOLD



Apartment

17 ELDER COURT, MEAD LANE, HERTFORD, SG13 7GD

Guide Price

£250,000

FEATURES

- River Facing Apartment
- Second Floor
- Integrated Appliances
- Fitted Wardrobes
- Allocated Parking
- Close To Hertford East BR
- Chain Free
- Council Tax Band - C



1 Bedroom Apartment located in Hertford

CHAIN FREE - One bedroom second floor river facing apartment ideally situated just a short walk from Hertford East mainline station that serves Liverpool Street, as well as Hertford Town's amenities.

Call us on

0199 253 2222

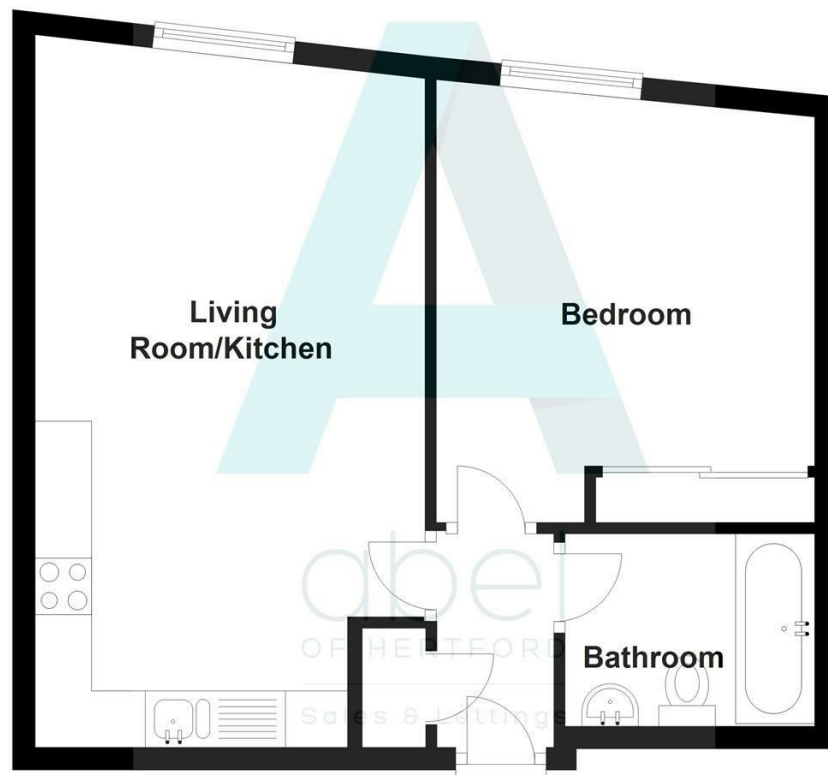
info@abelestateagent.co.uk

www.abelestateagent.co.uk

Council Tax Band

B

2nd Floor



Energy Efficiency Rating		Current	Potential
<i>Very energy efficient - lower running costs</i>			
(92 plus) A			
(81-91) B		82	86
(69-80) C			
(55-68) D			
(39-54) E			
(21-38) F			
(1-20) G			
<i>Not energy efficient - higher running costs</i>			
England & Wales		EU Directive 2002/91/EC	

Agents Note: Whilst every care has been taken to prepare these particulars, they are for guidance purposes only. All measurements are approximate and are for general guidance purposes only and whilst every care has been taken to ensure their accuracy, they should not be relied upon and potential buyers are advised to recheck the measurements.

