

LEASEHOLD



Apartment

# 14 BENGEO MEADOWS, HERTFORD, HERTFORDSHIRE, SG14 3HT

Guide Price

## £275,000

### FEATURES

- Council Tax Band - C
- Two Bedroom Ground Apartment
- Two Allocated Parking Space
- Extended Lease 150+ Years



# 2 Bedroom Apartment located in Hertfordshire

**\*\*CHAIN FREE & EXTENDED LEASE\*\*** - Located on the ground floor of this popular development is this two bedroom apartment with two allocated parking spaces.

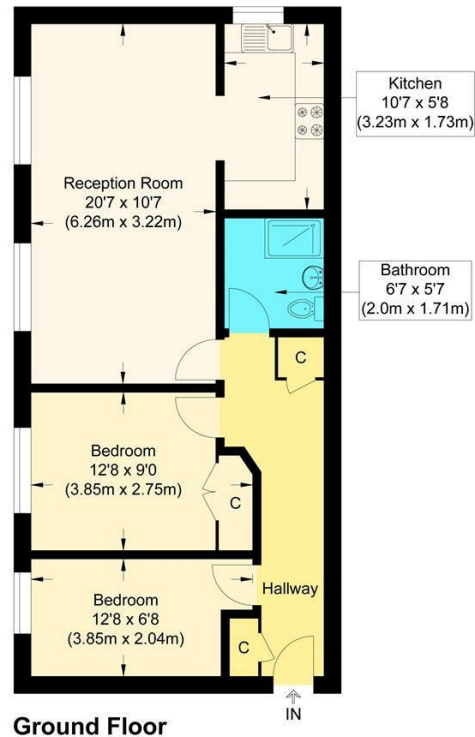
Call us on

**0199 253 2222**

[info@abelestateagent.co.uk](mailto:info@abelestateagent.co.uk)

[www.abelestateagent.co.uk](http://www.abelestateagent.co.uk)

**Council Tax Band**



**Bengeo Meadow**

Approximate Gross Internal Floor Area : 57.80 sq m / 622.15 sq ft  
Illustration for identification purposes only, measurements are approximate, not to scale.

Energy Efficiency Rating		Current	Potential
<i>Very energy efficient - lower running costs</i>			
(92 plus)	A		
(81-91)	B		
(69-80)	C		
(55-68)	D		
(39-54)	E		
(21-38)	F		
(1-20)	G		
<i>Not energy efficient - higher running costs</i>			
<b>England &amp; Wales</b>		EU Directive 2002/91/EC	

Agents Note: Whilst every care has been taken to prepare these particulars, they are for guidance purposes only. All measurements are approximate and are for general guidance purposes only and whilst every care has been taken to ensure their accuracy, they should not be relied upon and potential buyers are advised to recheck the measurements.

