



abel
OF HERTFORD
Sales & Lettings

Primrose Drive, Hertford, SG13
Guide Price £425,000



Primrose Drive, Hertford, SG13 7TG

A well-presented three bedroom mid-terrace family home located within a quiet cul-de-sac within the popular Foxholes development and SG13 school catchment.

DESCRIPTION

A well-presented three bedroom mid-terrace family home located within a quiet cul-de-sac within the popular Foxholes development and SG13 school catchment.

The property offers entrance hall, lounge, modern kitchen/dining room, three bedrooms, family bathroom, beautiful rear garden, parking and a garage!

Please call now to arrange a viewing.

ACCOMODATION:

ENTRANCE HALL

LOUNGE

13' 5" x 12' 2" (4.09m x 3.73m)

DINING ROOM

9' 2" x 7' 10" (2.81m x 2.4m)

KITCHEN

8' 11" x 7' 5" (2.74m x 2.28m)

FIRST FLOOR

LANDING

BEDROOM 1

12' 6" x 11' 9" (3.83m x 3.59m)

ENSUITE

5' 8" x 3' 0" (1.73m x 0.92m)

BEDROOM 2

9' 5" x 8' 0" (2.89m x 2.45m)

BEDROOM 3

8' 0" x 6' 1" (2.45m x 1.87m)

FAMILY BATHROOM

6' 2" x 5' 10" (1.88m x 1.78m)

OUTSIDE:

REAR GARDEN

32' 9" (10m)

PARKING

GARAGE

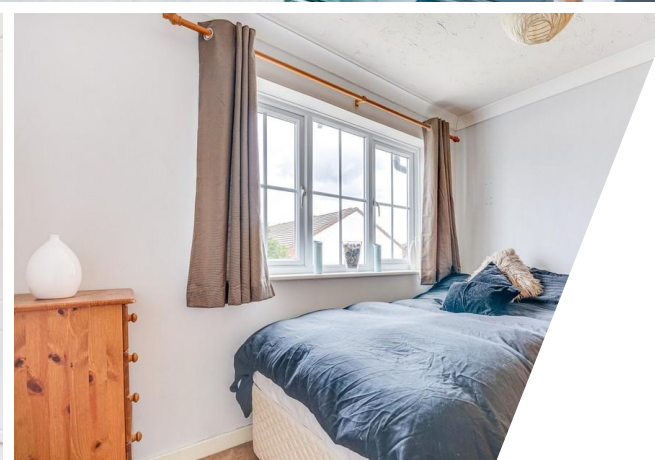




Abel
Primrose Drive

Approximate Gross Internal Floor Area : 69.50 sq m / 748.09 sq ft
Illustration for identification purposes only, measurements are approximate, not to scale.





Get in touch

Abel of Hertford
2 Market Place, Hertford
Hertfordshire, SG14 1DF
Monday to Friday: 8am - 7pm
Saturday: 9am - 5pm
Sunday: 10am - 2pm
T: +44 (0)1992 532 222
E: hello@abelofhertford.co.uk
www.abelofhertford.co.uk