



CHATTERTON

ESTATE AGENTS LTD

Shinehill Lane, South Littleton, Evesham, WR11 8TP

Guide Price £750,000

5 3 1

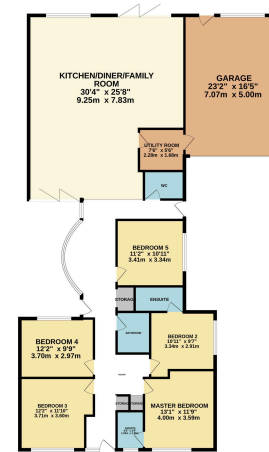


- RENOVATED DETACHED BESPOKE FAMILY BUNGALOW
- DOUBLE GARAGE
- OPEN PLAN LIVING SPACE
- LARGE PLOT WITH AMPLE PARKING
- FIVE DOUBLE BEDROOMS



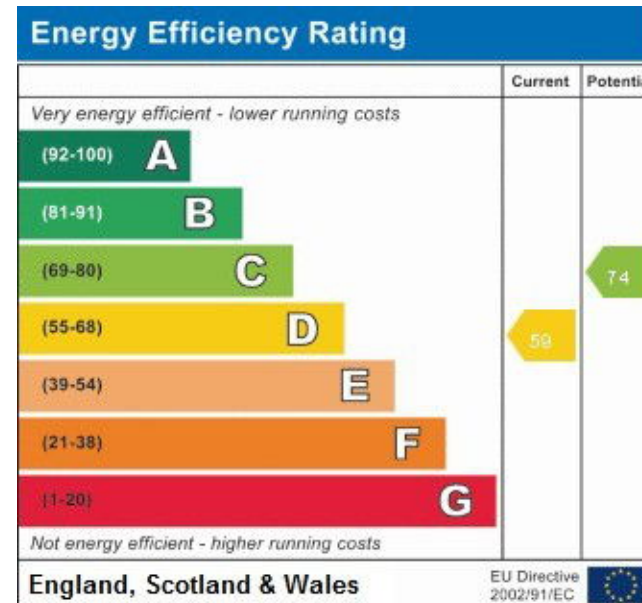


GROUND FLOOR
2221 sq.ft. (206.3 sq.m.) approx.



TOTAL FLOOR AREA: 2221 sq.ft. (206.3 sq.m.) approx.
While every effort has been made to ensure the accuracy of the floorplan contained herein, responsibility for errors, omissions, and/or inaccuracies remains with the advertiser. It is recommended that you verify all dimensions and specifications before finalizing any purchase agreement. The advertiser assumes no responsibility for any errors or omissions.

A fantastic opportunity to purchase a superb bespoke family home in a popular village. This completely renovated detached bungalow is situated on a large plot with generous parking and large double garage. There are FIVE DOUBLE BEDROOMS, three bathrooms and a massive open plan living space over 9 metres long! The property is double glazed and gas centrally heated.



Sunnydale, 34 Weston Road, Bretforton, Worcestershire WR11 7HW

Telephone: 01386 833969 ■ Email: joe@chattertonestates.co.uk ■ www.chattertonestates.co.uk