



**Foxglove Close, Evesham, WR11 1YU**

Guide Price  
**£330,000**



**Bedrooms: 4**

**Bathrooms: 1**

**Receptions: 2**

Situated in a quiet cul-de-sac within a popular residential area of Evesham, a spacious four-bedroom detached home offering excellent potential for modernisation. The property provides generous accommodation throughout and would make an ideal project for buyers looking to update a home to their own taste.

Outside, there is off-road parking to the front along with a single garage, while the rear garden offers great potential to be transformed into a fantastic outdoor area. With spacious rooms, a practical layout and scope to improve, this property represents an exciting opportunity in a sought-after location close to local amenities, schools and transport links.





Inside, the hallway leads to a bright sitting room and in turn a separate dining room and a practical breakfast kitchen, giving the ground floor a flexible and family-friendly layout. The dining room opens into a large conservatory, adding valuable extra living space and providing lovely views over the rear garden. A downstairs WC completes the ground floor.

Upstairs, the home features four good-sized bedrooms, each offering plenty of space and versatility, all served by a family bathroom. The property also benefits from a brand-new boiler, ensuring improved efficiency for the new owners.



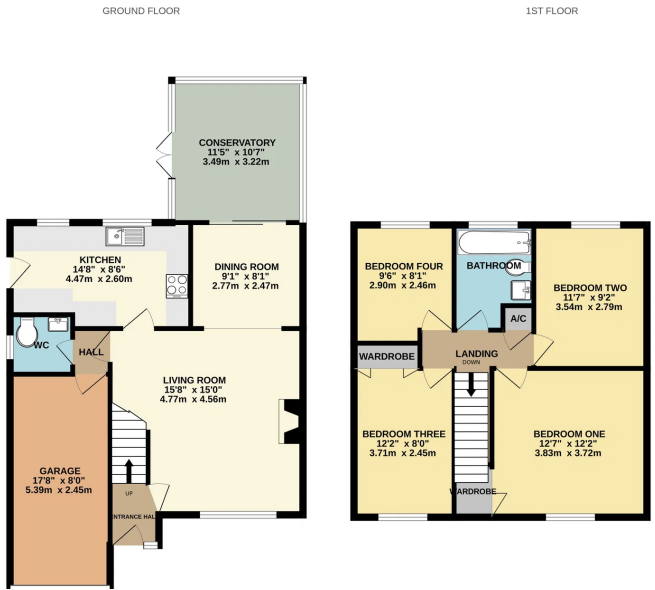


Evesham is a historic market town located in the Vale of Evesham in Worcestershire, England. Known for its picturesque setting on the banks of the River Avon, Evesham has a rich history dating back to the 8th century, with roots in Anglo-Saxon England. The town was once home to a significant abbey, Evesham Abbey, founded in the 8th century, although much of it was destroyed in the 16th century during the Dissolution of the Monasteries. Today, the remaining bell tower and Abbey Park offer a glimpse into its monastic past.

Evesham is also famed for its lush agricultural land, which has made it one of the UK's prime horticultural areas, often called the "Garden of England." The Vale of Evesham is especially celebrated for its spring blossom trails, as well as for growing produce like asparagus, apples, and plums. This farming heritage is honoured annually through events like the Asparagus Festival.

The town offers a mix of charming architecture, from medieval buildings to Georgian townhouses, alongside modern amenities, independent shops, and popular restaurants. Its location provides excellent transport links, with nearby Evesham train station offering routes to Worcester, Oxford, and London.

Outdoor activities are plentiful, with the River Avon and surrounding countryside offering picturesque spots for boating, fishing, and walking. Additionally, Evesham's close proximity to the Cotswolds adds to its appeal as a base for exploring the iconic villages and scenic landscapes of the area. The community spirit, historical significance, and natural beauty of Evesham make it an attractive place for both residents and visitors.



Whilst every attempt has been made to ensure the accuracy of the floorplan contained here, measurements of doors, windows, rooms and any other items are approximate and no responsibility is taken for any errors, omissions or misstatements. This plan is for guidance purposes only and should be used in conjunction with any prospective purchase. The services, goods and appliances shown here have not been tested and no guarantee as to their quantity or efficiency can be given.  
Made with floorplan 10025