



Your Logo

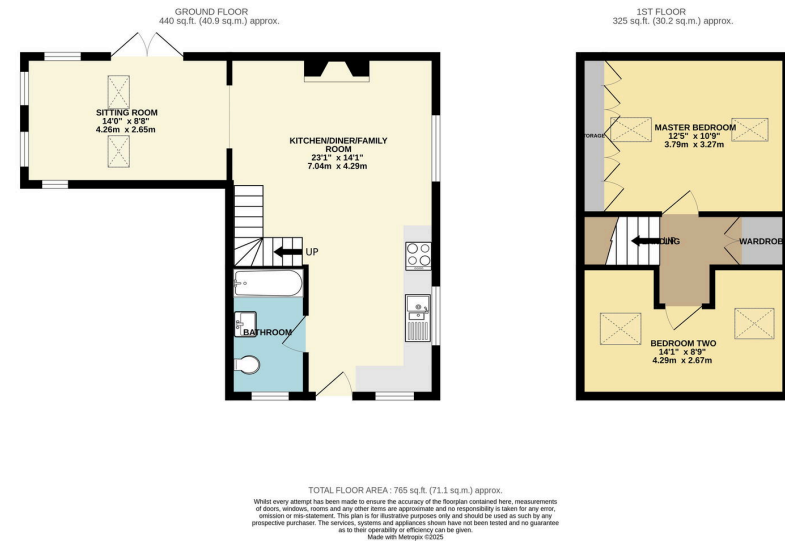
The Old Chapel, Evesham Road, Offenham, WR11 8SA
Offers Over £300,000

🛏 2 🍳 1 🛋 2

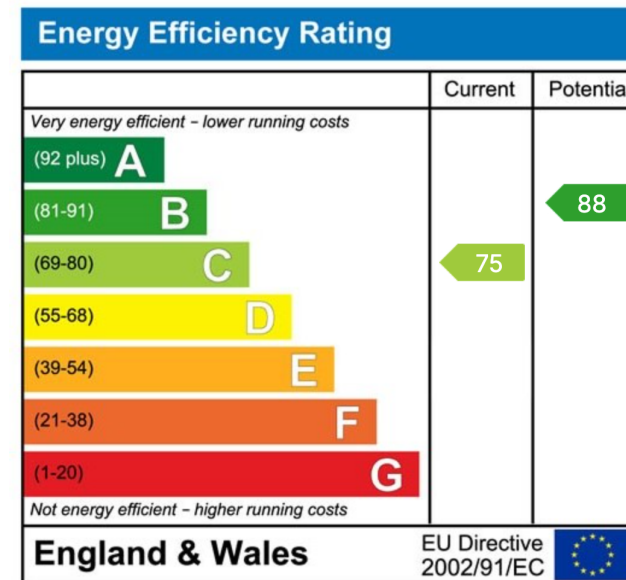


- Detached former chapel with period charm
- Recently extended ground floor with garden access
- Stylish ground floor bathroom with shower over bath
- Generous off-road parking for multiple vehicles
- Sought-after village location
- Two bedrooms & spacious living areas
- Modern kitchen with feature fireplace & tiled flooring
- Gas central heating & double glazing throughout
- Low-maintenance garden with patio & side storage
- Offered with no onward chain





The Old Chapel is a truly unique and beautifully presented two-bedroom detached former chapel, dating back to 1871. Recently extended and tastefully updated, this characterful home offers a wonderful blend of original features and modern comforts, nestled on the edge of the desirable village of Offenham.



Sunnydale, 34 Weston Road, Bretforton, Worcestershire WR11 7HW
 Telephone: 01386 833969 ■ Email: joe@chattertonestates.co.uk ■ www.chattertonestates.co.uk