



Juniper Cottage, Main Street, Bretforton, WR11 7JH

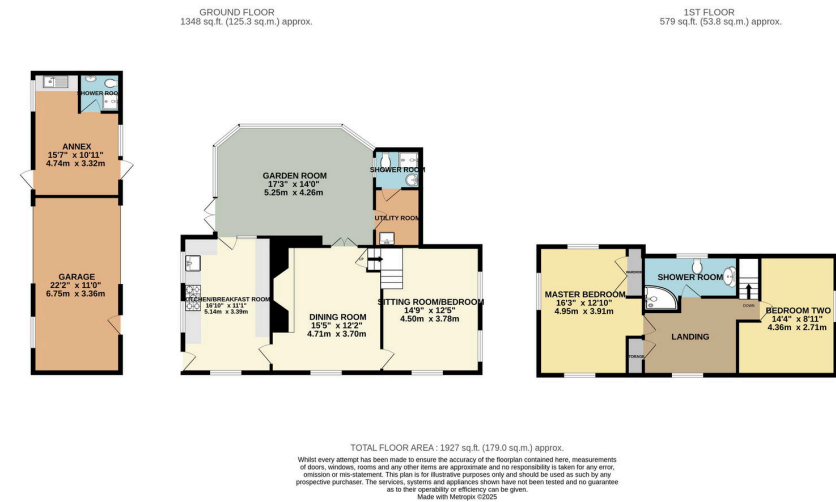
Guide Price £685,000

3 3 2



- Stunning Detached 15th Century Cottage (not listed)
- Beautiful Large Mature Garden
- Character Features Throughout
- All Mains Services Connected plus Solar Panels
- Breakfast Kitchen
- Self-Contained Annex
- Off-Road Parking and Garage
- Heart of Sought-After Village
- Lovely Garden Room
- Two Reception Rooms

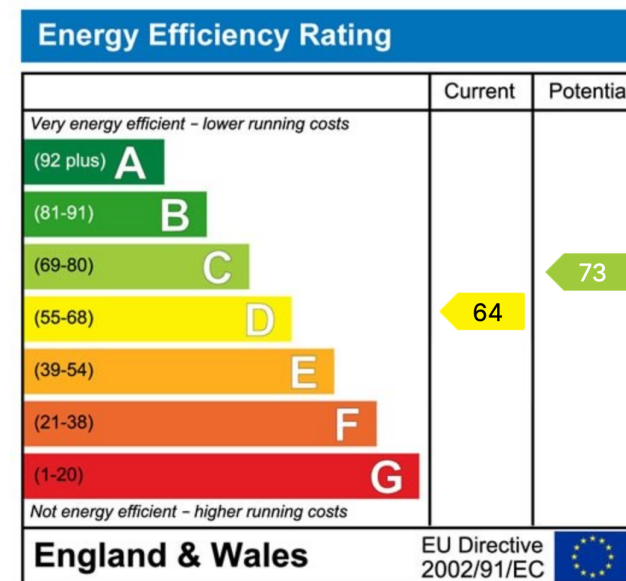




A truly exceptional detached cottage dating back to the 15th century, thoughtfully modernised while preserving a wealth of original character features. Located in the heart of the sought-after village of Bretforton, this charming home also includes a separate one-bedroom annex, garage, off-road parking, and a beautifully mature, large garden.

The main cottage boasts original exposed beams, wooden doors, a mixture of quarry, flagstone and wood flooring and a grand inglenook fireplace, creating a warm and inviting atmosphere. The modern upgrades, such as solar panels, provide comfortable, contemporary living while complementing the property's historic charm.

A rare opportunity to own a piece of history, combining period charm with modern convenience in an idyllic village setting.



Sunnydale, 34 Weston Road, Bretforton, Worcestershire WR11 7HW

Telephone: 01386 833969 ■ Email: joe@chattertonestates.co.uk ■ www.chattertonestates.co.uk