



St. David's Drive, Evesham, WR11 2AU

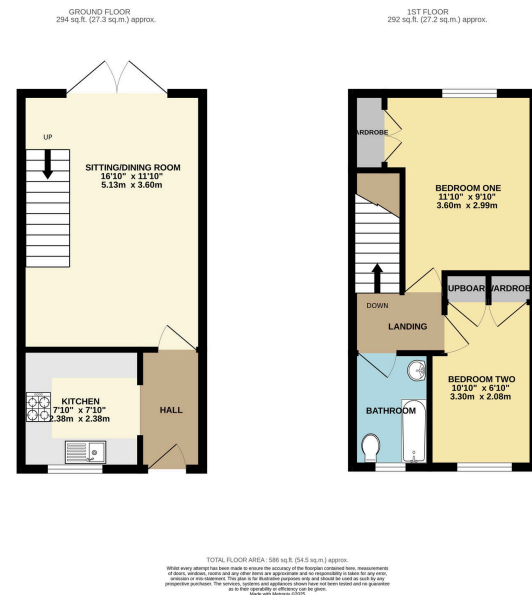
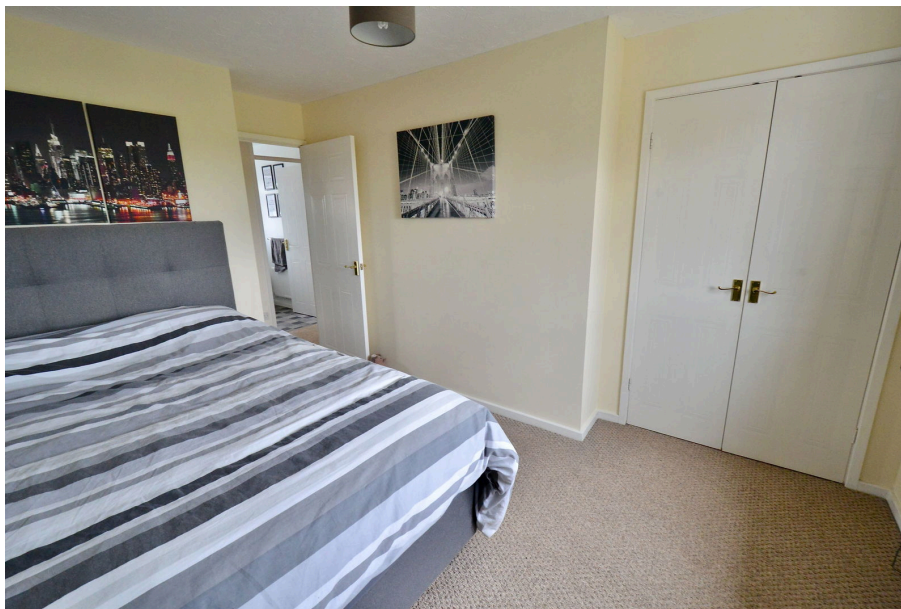
Offers Over £210,000

2 1 1



- Immaculate Two Bedroom Home
- Good Rear Garden
- Built-in Wardrobes
- Double Glazing
- Spacious Living Area
- Off Road Parking
- Backing onto the Park
- Lovely Kitchen
- Gas Central Heating
- Peaceful Location

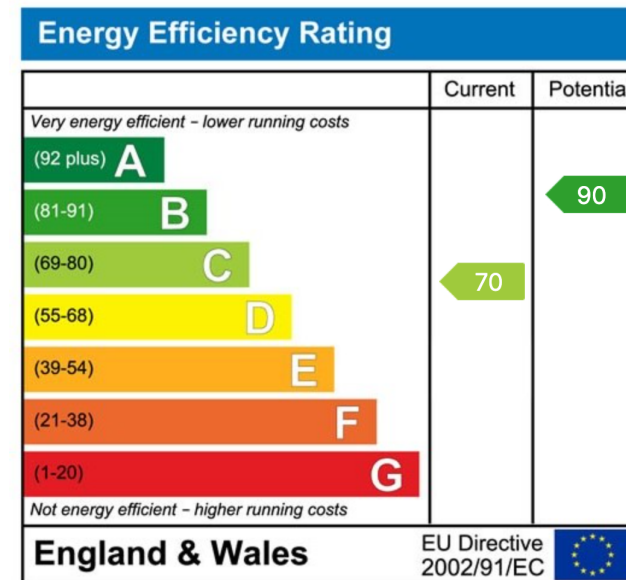




A beautifully presented two-bedroom modern terraced home, perfectly situated in Evesham with a rear garden backing onto the park. This stylish property benefits from off-road parking, double glazing, and gas central heating, making it a warm and energy-efficient home.

Inside, both bedrooms feature built-in wardrobes, offering great storage solutions. The modern kitchen is sleek and well-equipped, while the spacious sitting/dining/family room provides an inviting space for relaxing and entertaining.

With its fantastic location, ample outdoor space, and modern finish throughout, this home is ideal for first-time buyers, downsizers, or investors.



Sunnydale, 34 Weston Road, Bretforton, Worcestershire WR11 7HW
 Telephone: 01386 833969 ■ Email: joe@chattertonestates.co.uk ■ www.chattertonestates.co.uk