





# Wickliffe House Bretforton Road Badsey WR11 7XQ

£595,000

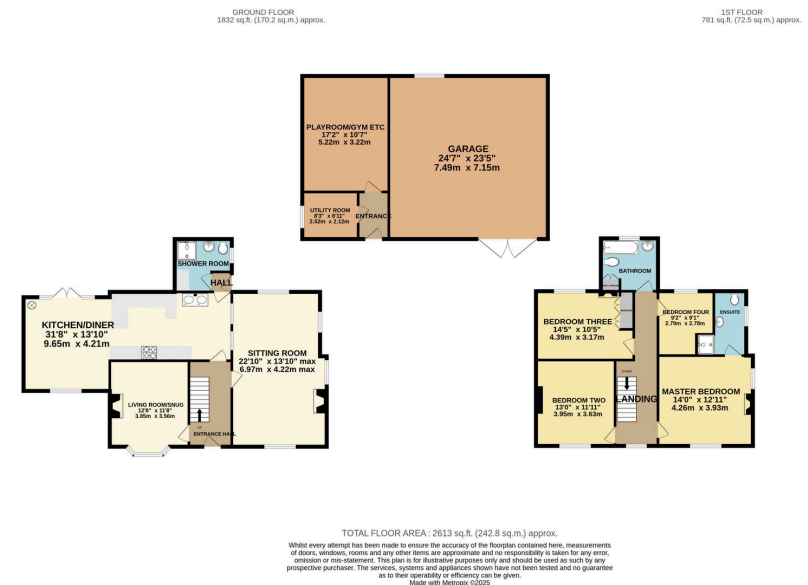
4 3 3





- Stunning Extended Traditional Family Home
- Four Bedrooms
- Good Size Sunny Rear Garden
- Large Bright Sitting Room and Additional Lounge
- Double Glazing
- Huge Garage with store room and Gym/Playroom
- Three Bathrooms
- Beautiful Kitchen Diner
- Gas Central Heating
- Loads of Parking





An immaculate and greatly extended four-bedroom detached character property, built in 1890, offering a perfect blend of period charm and modern living. This chain-free home boasts three bathrooms, a breathtaking kitchen diner with a vaulted ceiling, and two spacious living rooms. Outside, the property features ample secure gated parking, a generously sized sunny rear garden, and a large garage with a storeroom and a versatile gym/playroom. With double glazing and gas central heating throughout, this beautifully presented home is ready to move into. A rare opportunity to own a characterful yet contemporary family home—viewing is highly recommended.

Sunnydale, 34 Weston Road, Bretforton, Worcestershire WR11 7HW

Telephone: 01386 833969 ■ Email: [joe@chattertonestates.co.uk](mailto:joe@chattertonestates.co.uk) ■ [www.chattertonestates.co.uk](http://www.chattertonestates.co.uk)