



Orchard Way High Street Badsey WR11 7EW

Guide Price £275,000

🛏 2 🚿 1 🚗 2



This delightful two double bedroom semi-detached character cottage, located in the peaceful heart of Badsey, is offered to the market chain free. The property features a spacious kitchen diner, a cosy sitting room, two generously sized bedrooms, and a well-appointed bathroom.

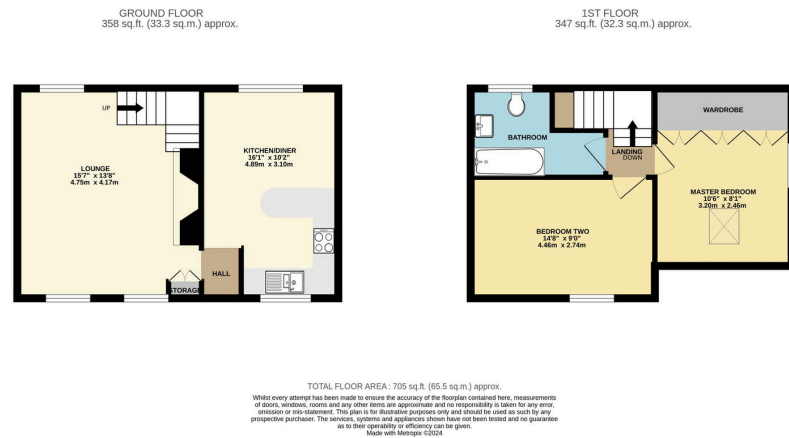
With its charming period features and central village location, this home provides the perfect blend of tranquillity and convenience, making it an ideal choice for those seeking character and comfort in a lovely rural setting. The property enjoys a sunny front garden, has a log burner in a large inglenook fireplace and is gas centrally heated.

BADSEY

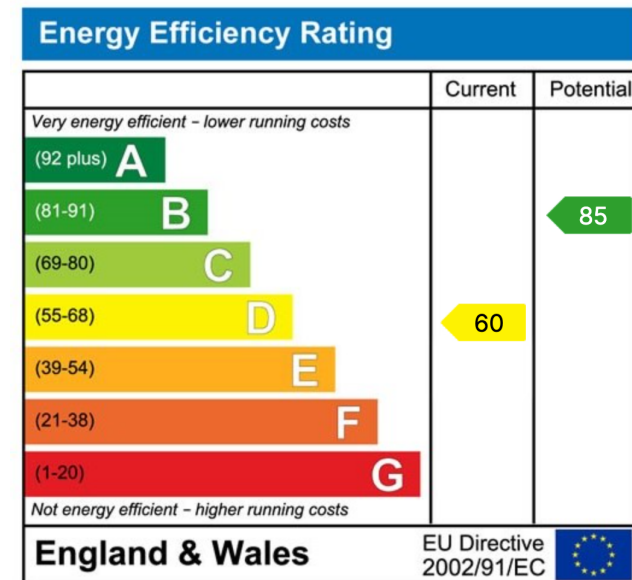
Badsey is a thriving community village and civil parish in the Wychavon district of Worcestershire. It lies approximately 2 miles to the East of the market town of Evesham, 4.5 miles from Broadway and about 15 miles South West of Stratford-upon-Avon.

Badsey has a First School and Pre-School located in the centre of the village as well as a Church, Butchers, a Spar shop (open 7 days a week) and a Post Office (located inside the Spar). Badsey is also home to two Public Houses and a thriving Sports Club and Park.





- CHAIN FREE
- Kitchen Diner
- Two Double Bedrooms
- Peaceful Central Location
- Gas Central Heating
- Two Bedroom Character Cottage
- Sitting Room
- First Floor Bathroom
- Sunny Garden



Sunnydale, 34 Weston Road, Bretforton, Worcestershire WR11 7HW
 Telephone: 01386 833969 ■ Email: joe@chattertonestates.co.uk ■ www.chattertonestates.co.uk