





Evendene Road, Hampton, Evesham, WR11 2PZ

Guide Price £250,000

🛏️ 2 🚿 1 🚗 1

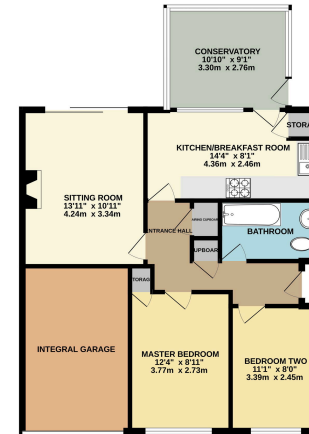






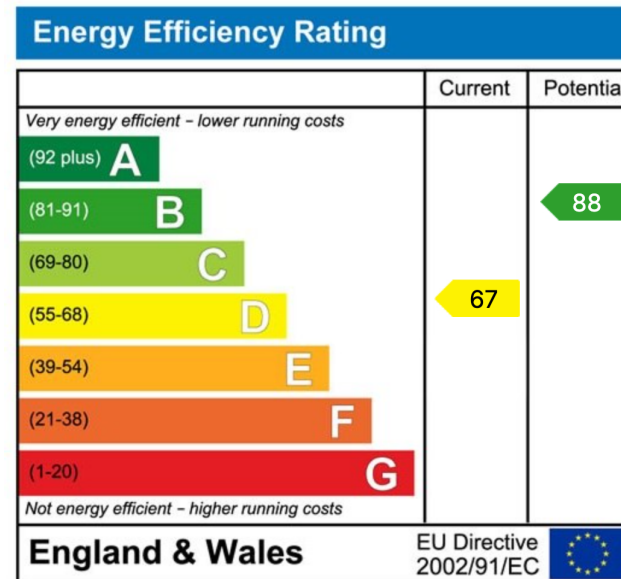


GROUND FLOOR  
846 sq.ft. (78.6 sq.m.) approx.



TOTAL FLOOR AREA: 846 sq.ft. (78.6 sq.m.) approx.  
We warrant every aspect of the data made available to you. The accuracy of the figures contained herein, representations of areas, volumes, lengths and other data are not guaranteed and are approximate. Figures are for information only and should not be used for any other purpose. The information contained herein is not intended to be used as a guarantee of any kind.

Offered Chain Free this two-bedroom semi-detached bungalow is a fantastic chance to create your dream home. Situated in a peaceful location, this property is in need of cosmetic improvement, providing a blank canvas for those looking to add their personal touch. The bungalow features a practical layout with two well-proportioned bedrooms, a large sitting room, a quality conservatory and a sunny rear garden, perfect for relaxing or entertaining.



Sunnydale, 34 Weston Road, Bretforton, Worcestershire WR11 7HW

Telephone: 01386 833969 ■ Email: [joe@chattertonestates.co.uk](mailto:joe@chattertonestates.co.uk) ■ [www.chattertonestates.co.uk](http://www.chattertonestates.co.uk)