



CHATTERTON

ESTATE AGENTS LTD

Tamar Place Evesham WR11 3FD

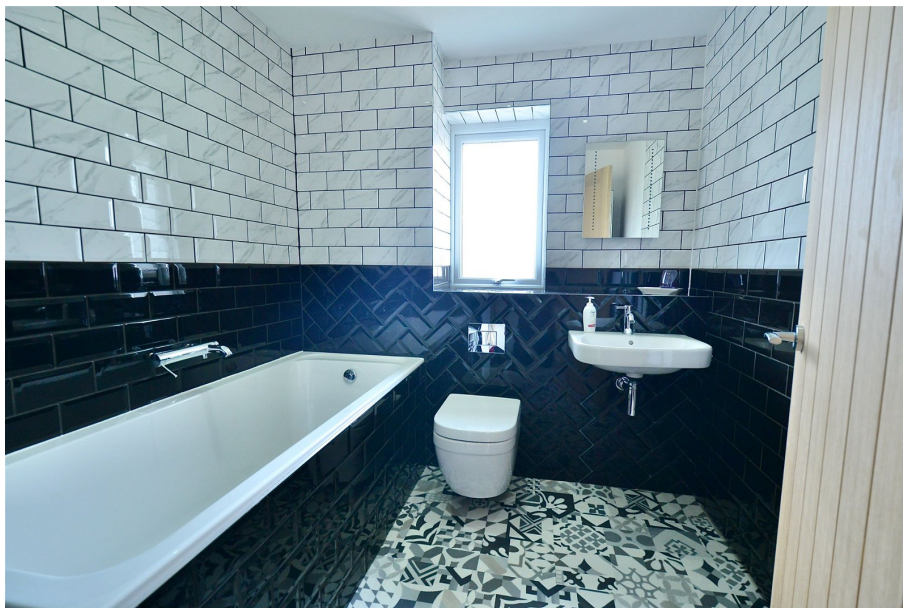
£465,000

🛏️ 4 🚿 2 🚺 2



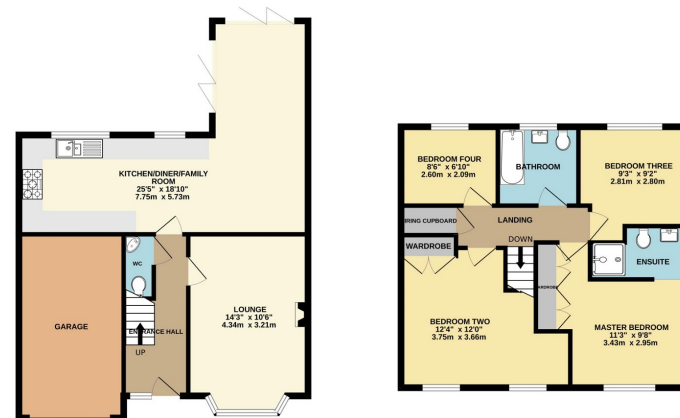
- Stunning Detached Family Home
- Extended to the Rear
- Two Bathrooms
- Stunning Lounge
- New Kitchen and Bathrooms
- Completely Refurbished Throughout
- Four Good Size Bedrooms
- Open Plan Kitchen Dining Living Area
- Ample Parking and Garage
- New Double Glazing, Doors and Heating System





GROUND FLOOR
694 sq.ft. (64.4 sq.m.) approx.

1ST FLOOR
584 sq.ft. (54.2 sq.m.) approx.

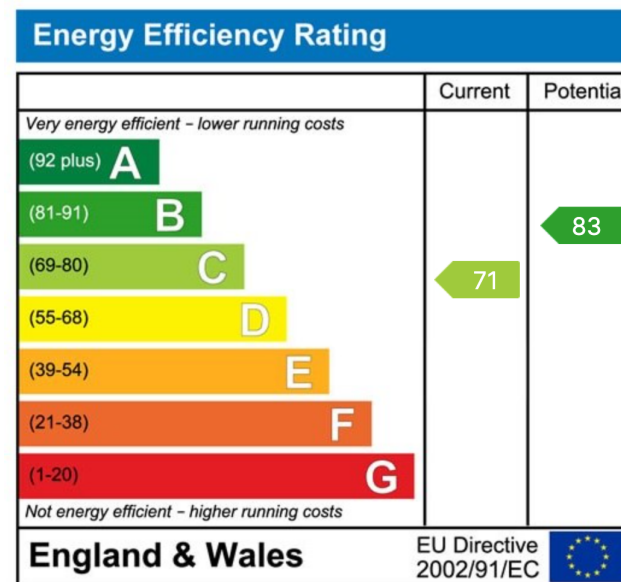


TOTAL FLOOR AREA: 1277 sq.ft. (118.7 sq.m.) approx.
While every attempt has been made to ensure the accuracy of the figures contained herein, measurements of doors, windows, rooms and any other space are approximate and it is recommended that you verify any dimensions or measurements. This plan is for illustrative purposes only and should not be used as a basis for any prospective purchase. The seller makes no representation or warranty as to their quantity or efficiency can be given.
Made with MyHome 2024

This completely refurbished extended four-bedroom detached family home situated on the desirable location of Cotswold Rise, offers a contemporary and luxurious living environment, perfect for modern family life. With its stylish interior, it presents an ideal opportunity for those seeking a high-quality home in a sought-after area.

Upon entering the home, you'll find a meticulously renovated interior with new kitchen, bathrooms, windows, and doors. The property has been completely redecorated combined with brand new flooring throughout plus oak interior doors and shutters to many of the windows.

The living areas are spacious, and the kitchen family room is a highlight, featuring sleek cabinetry, granite worktops and integrated appliances. It is open plan, creating a sociable hub for cooking, dining, and spending time with family and friends. The welcoming living room has a bay window to the front, lovely flooring, and a recently installed log burner.



Sunnydale, 34 Weston Road, Bretforton, Worcestershire WR11 7HW

Telephone: 01386 833969 ■ Email: joe@chattertonestates.co.uk ■ www.chattertonestates.co.uk

There are four well-appointed bedrooms, offering ample space and each bedroom features modern décor. There are built-in storage wardrobes to bedrooms one and two, and there are