



Weston Road Bretforton WR11 7HW

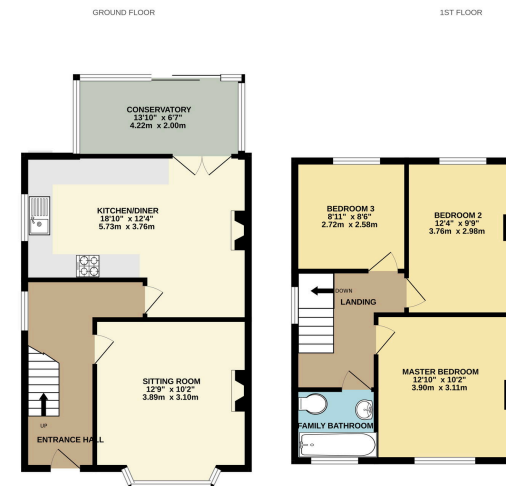
Offers Over £330,000

3 1 1



- Three Bedroom Edwardian Semi-Detached Family Home
- Well Appointed Accommodation
- Kitchen Diner
- Conservatory
- Off Road Parking
- Various Outbuildings
- Sunny Aspect to Stunning Rear Garden
- Gas Central Heating
- Double Glazing
- Sought-After Village Location

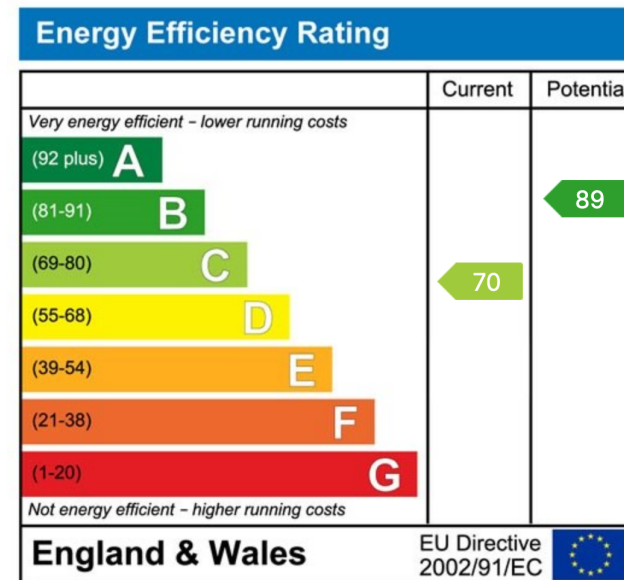




While every effort has been made to ensure the accuracy of the floor plan, the measurements of walls, windows, doors and any other details are approximate and no responsibility is taken for any errors, omissions or misstatements. The plan is for general guidance only and should not be used for any professional purposes. The services, fixtures and appliances shown have been noted and the guarantee as to their suitability or efficiency can be given. Plans with dimensions ©2011

This lovely three-bedroom Edwardian family home, located in the charming village of Bretforton, offers a perfect blend of period elegance and modern comforts. With off-road parking, a beautifully maintained flower garden, and a variety of useful outbuildings, this property is ideal for those seeking a characterful home in a peaceful rural setting.

The home features three generously sized bedrooms, each with high ceilings, and large windows creating light-filled spaces that are both comfortable and inviting.



Sunnydale, 34 Weston Road, Bretforton, Worcestershire WR11 7HW

Telephone: 01386 833969 ■ Email: joe@chattertonestates.co.uk ■ www.chattertonestates.co.uk