



Ashwin Court Bretforton WR11 7HL

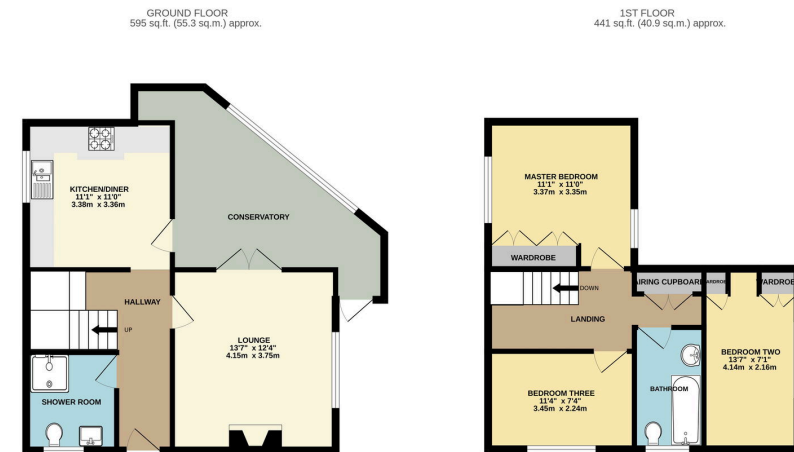
Guide Price £285,000

3 2 1



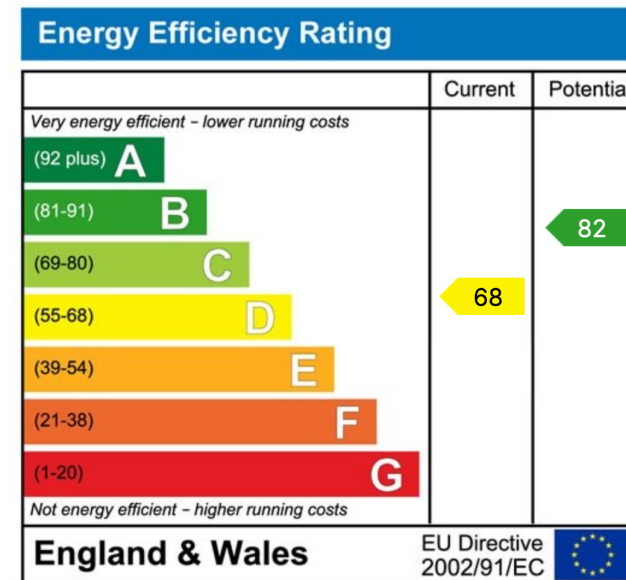
- Peaceful village setting
- Three bedrooms
- Spacious fitted kitchen
- Conservatory
- Allocated parking
- Modern cottage
- Two bathrooms
- Lounge with fireplace
- Private sunny courtyard
- Communal gardens





TOTAL FLOOR AREA - 1036 sq.ft. (96.2 sq.m.) approx.
Whilst every attempt has been made to ensure the accuracy of the floorplan contained here, measurements of doors, windows, rooms and any other items are approximate and no responsibility is taken for any error, omission or mis-statement. This plan is for illustrative purposes only and should be used as such by any prospective purchaser. The services, systems and appliances shown have not been tested and no guarantee as to their operability or efficiency can be given.
Made with Metreage 10/04

Nestled within the picturesque setting of Ashwin Court in Bretforton, this modern cottage with three bedrooms offers comfortable and stylish living spaces ideal for families or individuals seeking a contemporary home in a charming village setting.



Sunnydale, 34 Weston Road, Bretforton, Worcestershire WR11 7HW

Telephone: 01386 833969 ■ Email: joe@chattertonestates.co.uk ■ www.chattertonestates.co.uk