



Walnut Cottage Top Street Charlton WR10 3LE

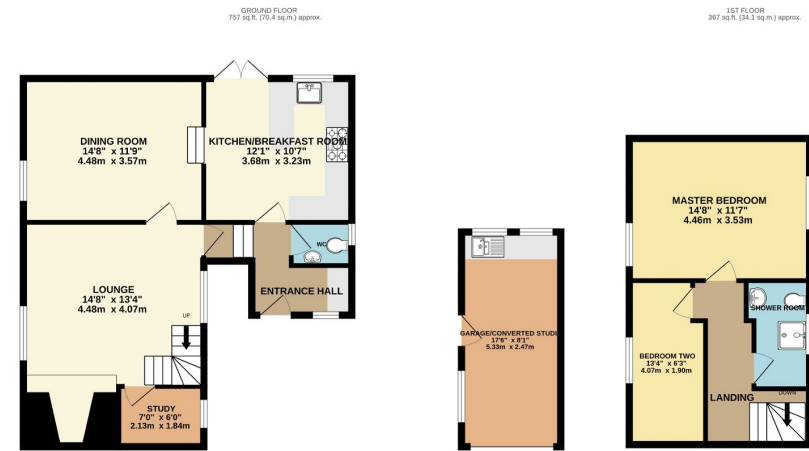
Guide Price £385,000

🛏️ 2 🚿 1 🚗 2



- Elegant and charming cottage
- Traditional kitchen
- Dining room
- Two bedrooms
- Converted garage studio
- Picturesque village setting
- Exposed timber beams
- Cosy living room with inglenook fireplace
- Beautiful country cottage gardens
- Ample off road parking





TOTAL FLOOR AREA : 1124 sq ft. (104.4 sq.m.) approx.
Whilst every attempt has been made to ensure the accuracy of the floorplan contained here, measurements of doors, windows, rooms and any other items are approximate and no responsibility is taken for any error, omission or mis-statement. This plan is for illustrative purposes only and should be used as such by any prospective purchaser. The services, systems and appliances shown have not been tested and no guarantee as to their operability or efficiency can be given.
Made with Metropix ©2024

This most elegant and charming early 17th-century cottage in Charlton village, with its sympathetically restored features and historic ambiance, provides a rare opportunity to own a piece of Tudor history. From the exquisite, exposed timbers to the inviting inglenook fireplace, every detail showcases the timeless allure of this delightful home within a picturesque village setting. With extended ground floor accommodation, two good size bedrooms, ample off-road parking, a garage converted into a studio and lovely well-stocked gardens this cottage offers a practical living space.



Sunnydale, 34 Weston Road, Bretforton, Worcestershire WR11 7HW

Telephone: 01386 833969 ■ Email: joe@chattertonestates.co.uk ■ www.chattertonestates.co.uk