

williamslettings



25 Queens Park, Mold, CH7 1TG

£895

 3  1  1  C

EPC - C71 Council Tax Band - C Deposit - £895

Queens Park, Mold

3 Bedrooms - House

Located in the historic market town of Mold. This practical three-bedroom mid-terrace house is perfect for a small family. The property briefly comprises of a living room, kitchen and sunroom to the rear, three bedrooms and a bathroom. There is also a good size garden to the rear. To be considered for this property you will need an annual income of above £26,850

Accommodation

uPVC double glazed door leads into:

Entrance Hall

With power points, radiator and doors off.

Living Room

15'8" x 10'9"

With radiator, power points, T.V aerial and uPVC window to the front elevation.

Kitchen

15'5" x 9'10"

With a range of wall, drawer and base units with worktops over, integrated electric oven with electric hob over and extractor fan, plumbing for a washing machine and dishwasher, radiator, power points, under stair storage uPVC window to the front elevation and rear elevation and uPVC partially obscure door leading into :

Sitting Room/ Dining Room

17'8" maximum x 8'10"

With uPVC windows to the rear and side elevations, vinyl flooring, power points and uPVC door leading onto the rear.

Stairs/Landing

With power point, loft access hatch and doors off.

Bedroom 1

16'0" x 9'2"

With inbuilt cupboards, radiator, power points, uPVC window to the front elevation and further uPVC overlooking the rear elevation.

Bedroom 2

10'5" x 9'2"

With power points, radiator and uPVC to the front elevation with views of the hillside.

Bedroom 3

10'5" x 6'2"

With uPVC window to the rear elevation, radiator, power points and mounted central heating boiler.

Bathroom

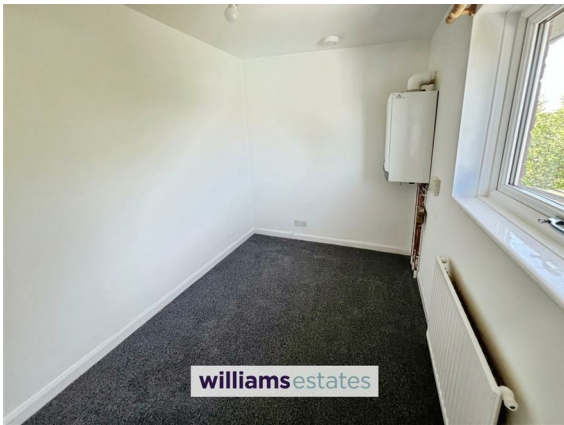
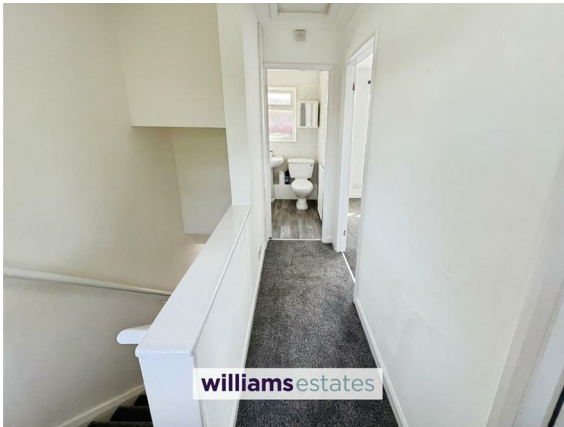
With uPVC obscure window to the front elevation, floor to ceiling tiled walls, bath with stainless steel taps, wall mounted electric shower, pedestal wash basin with stainless steel taps, W.C and radiator.

Outside

The front elevation is approached via a tarmacadam driveway for off street parking. The rear garden is laid to lawn and bound with timber fencing.

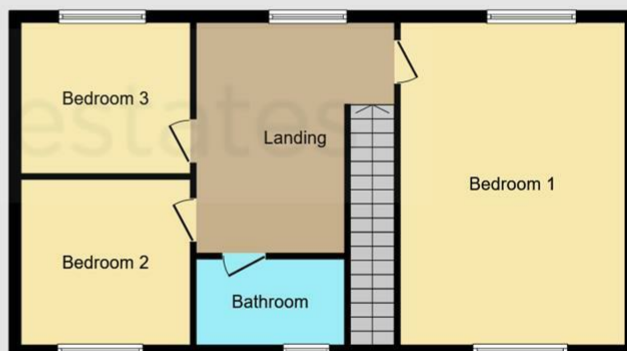
Directions

Head north on Park Avenue towards High street/A5119. Then, turn right onto high Street/A5119 and continue to follow A5119. Turn left onto Clayton Road. Continue on Clayton Road until you reach the property.





Ground Floor
Floor area 88.1 m² (948 sq.ft.)



First Floor
Floor area 63.3 m² (681 sq.ft.)

TOTAL: 151.4 m² (1,630 sq.ft.)

This floor plan is for illustrative purposes only. It is not drawn to scale. Any measurements, floor areas (including any total floor area), openings and orientations are approximate. No details are guaranteed, they cannot be relied upon for any purpose and do not form any part of any agreement. No liability is taken for any error, omission or misstatement. A party must rely upon its own inspection(s). Powered by www.Propertybox.io

williams
estates

Energy Efficiency Rating

| | Current | Potential |
|---------------------------------------------|-------------------------|-----------|
| Very energy efficient - lower running costs | | |
| (92 plus) A | | |
| (81-91) B | | 85 |
| (69-80) C | 71 | |
| (55-68) D | | |
| (39-54) E | | |
| (21-38) F | | |
| (1-20) G | | |
| Not energy efficient - higher running costs | | |
| England & Wales | EU Directive 2002/91/EC | |

Call us on
01745 299399

Lettings@williamsestates.com

Agents Note: Whilst every care has been taken to prepare these particulars, they are for guidance purposes only. All measurements are approximate and are for general guidance purposes only and whilst every care has been taken to ensure their accuracy, they should not be relied upon and potential buyers are advised to recheck the measurements themselves.

williamslettings