

£240,000

Plot 3, 37 School Lane, Manea, PE15 0JN



To arrange a viewing call us now on 01354 701000

Brand new detached bungalow
AT THE HEART OF THE
VILLAGE!!! Boast off road
parking, THREE BEDROOMS and
lovely OPEN PLAN LIVING
SPACE WITH BI-FOLD DOOR to
garden. The village is well
appointed with transport links,
Dr's surgery and so much more!!!

£240,000

Plot 3, 37 School Lane, Manea, PE15 0JN



Hall
Cupboard, radiator.

Kitchen/Living Room/Family Room
6.36m (20'10") x 4.95m (16'3") max
Open plan living space with kitchen to be fitted, window to rear, bi-fold doors opening onto garden.

Bedroom 1
3.61m (11'10") x 2.53m (8'4")
Window to front, radiator.

Bedroom 2
3.10m (10'2") x 2.52m (8'3")
Window to front, fitted wardrobe, radiator.

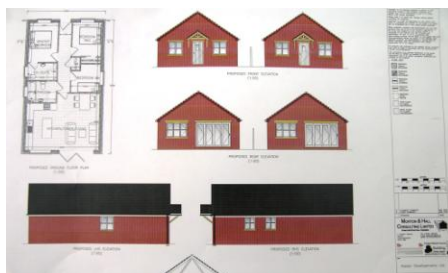
Bedroom 3
2.55m (8'4") x 2.52m (8'3")
Window to side, radiator.

Family Bathroom
Window to side and to be fitted with a four piece suite.

Outside
There is garden and off road parking.

Directions
On entering Manea from March direction
School Lane can be found on the right hand side and the bungalows can be found on the left hand side.

It should be noted that all dimensions have been taken from plan.



Ellis Winters has not tested any apparatus, equipment fitting or services and so cannot verify that they are in working order. The buyer is advised to obtain verification from their solicitor or surveyor. Floor plans are for representational purposes only and are not to scale.

Ellis Winters & Co 52 High Street, March, Cambridgeshire, PE15 9JR
Tel: 01354 701000 Email: info@elliswinters.co.uk www.elliswinters.co.uk