

# £190,000

21 Norwalde Street, March, PE15 8JE



To arrange a viewing call us now on 01354 701000

Located close to town and the train station this home is offered with no chain boasts many features including a generous lounge/diner, kitchen, four piece bathroom suite plus three bedrooms. Outside there is ample parking, garage plus good size, south, west facing garden. EPC D



# £190,000

21 Norwalde Street, March, PE15 8JE



Located close to town and the train station this home is offered with no chain boasts many features including a generous lounge/diner, kitchen, four piece bathroom suite plus three bedrooms. Outside there is ample parking, garage plus good size, south, west facing garden.

#### Outside

To the front of the property there is off road parking with a gate leading to a hard standing area with garage. The remainder of the garden is laid to patio and lawn. There is a pedestrian right of way across the garden for the neighbour.

#### Ground Floor

##### Hall

Stairs to first floor and landing, radiator.

##### Lounge/Dining Room

6.36m (20'11") x 4.92m (16'2") max  
Window to front and rear, two radiators, cupboard under the stairs.

##### Kitchen

5.04m (16'7") x 2.36m (7'9")  
Fitted with wall and base units with electric cooker point, sink unit with mixer tap, gas fired boiler, space for washing machine, two windows to side, radiator, door to garden.

##### Bathroom

Fitted with a four piece suite comprising bath, separate shower cubicle, wash hand basin and WC, window to rear and side, radiator.

#### First Floor & Landing

##### Bedroom 1

3.98m (13'1") x 3.12m (10'3")  
Window to front, radiator, cupboard.

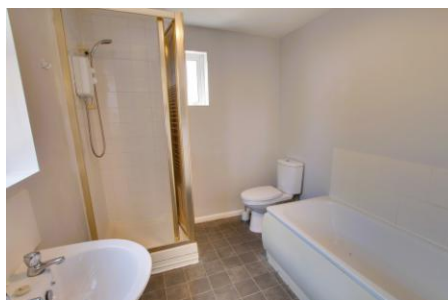
##### Bedroom 2

3.17m (10'5") x 2.41m (7'11")  
Window to rear, radiator.

##### Bedroom 3

2.41m (7'11") x 2.26m (7'5")  
Window to rear, radiator.

Ellis Winters has not tested any apparatus, equipment fitting or services and so cannot verify that they are in working order. The buyer is advised to obtain verification from their solicitor or surveyor. Floor plans are for representational purposes only and are not to scale.



Ellis Winters & Co 52 High Street, March, Cambridgeshire, PE15 9JR

Tel: 01354 701000 Email: [info@elliswinters.co.uk](mailto:info@elliswinters.co.uk) [www.elliswinters.co.uk](http://www.elliswinters.co.uk)