

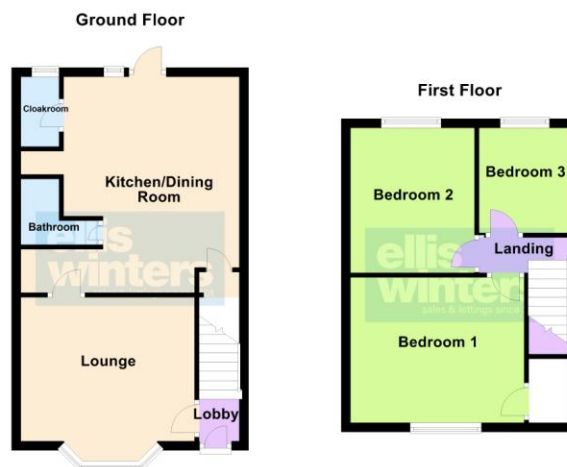
£175,000

239 Norwood Road, March, PE15 8JL



To arrange a viewing call us now on 01354 701000

This lovely home is larger than it looks and boasts lounge with bay window, kitchen/diner with integral oven and hob plus double doors to the garden, ground floor bathroom and three bedrooms to the first floor. Outside there is off road parking and a good size, private rear garden. EPC D



# £175,000

239 Norwood Road, March, PE15 8JL



This lovely home is larger than it looks and boasts lounge with bay window, kitchen/diner with integral oven and hob plus double doors to the garden, ground floor bathroom and three bedrooms to the first floor. Outside there is off road parking and a good size, private rear garden. EPC D

First Floor & Landing  
Loft access.

Bedroom 1  
3.73m (12'3") x 3.09m (10'2")  
Window to front, radiator, storage cupboard.

Bedroom 2  
3.13m (10'3") x 2.65m (8'8")  
Window to rear, radiator, laminate flooring.

Bedroom 3  
2.31m (7'7") x 1.86m (6'1")  
Window to rear, radiator, laminate flooring.

Outside  
To the front of the property there is off road parking. To the rear garden there is a patio area great for entertaining, there is a side gate of which you have pedestrian access across but neighbouring home has no access through your garden. Further gardens are then laid to lawn with fenced borders and there are two garden sheds.

Freehold  
Council tax band A

Ellis Winters has not tested any apparatus, equipment fitting or services and so cannot verify that they are in working order. The buyer is advised to obtain verification from their solicitor or surveyor. Floor plans are for representational purposes only and are not to scale.



Ground Floor  
  
Lobby  
Radiator, stairs to first floor and landing.

Lounge  
3.73m (12'3") x 3.07m (10'1")  
Bay window to front, radiator.

Kitchen/Dining Room  
6.27m max (20'6") x 2.12m min (6'11")  
Fitted with a range of base and wall units incorporating a stainless steel sink with drainer and mixer tap, double electric cooker with induction hob and extractor overhead, space for fridge/freezer, space for tumble drier, space for dishwasher, plumbing for washing machine. There is tiled flooring, radiator, storage under stairs cupboard, patio door to rear garden.

Bathroom  
Fitted with a two piece suite comprising of a panelled P shaped bath with shower overhead, wash hand basin, tiled flooring, partly tiled walls, heated towel rail, skylight window.

Cloakroom  
Fitted with a two piece suite comprising of a low level WC, wash hand basin with tiled splashbacks, tiled flooring, gas fired combi boiler and window to rear.



Ellis Winters & Co 52 High Street, March, Cambridgeshire, PE15 9JR  
Tel: 01354 701000 Email: [info@elliswinters.co.uk](mailto:info@elliswinters.co.uk) [www.elliswinters.co.uk](http://www.elliswinters.co.uk)