

£700 pcm

9 Old Court Place, March, PE15 9NH



To arrange a viewing call us now on 01354 701000

Deposit £800

Coming soon - A well presented second floor apartment situated close to the town centre. The property has a kitchen, a good sized living room, bathroom, a study and two bedrooms. There is allocated parking.
EPC - C



£700 pcm

9 Old Court Place, March, PE15 9NH



SECOND FLOOR LANDING Window to side, access to loft, stairs to lower floor, door to:

STUDY

2.00m (6'7") x 1.43m (4'8") Window to side, wooden laminate flooring, coving to ceiling,

HALL Wooden laminate flooring, radiator, coving to ceiling, storage cupboards.

KITCHEN

2.88m (9'5") x 2.38m (7'10") Fitted with a matching base and eye level units, stainless steel sink, plumbing for automatic washing machine, space for fridge/freezer, electric oven, four ring ceramic hob, window to front, ceramic tiled flooring, coving to ceiling.

LIVING ROOM

5.13m (16'10") x 3.77m (12'4") Window to rear, living flame effect electric fire with wooden surround, radiator, wooden laminate flooring, coving to ceiling.

BEDROOM 1

3.57m (11'9") x 3.33m (10'11") Window to side, radiator, built-in double wardrobe, wooden laminate flooring, coving to ceiling.

BEDROOM 2

2.84m (9'4") x 2.80m (9'2") Window to rear, radiator, wooden laminate flooring, coving to ceiling.

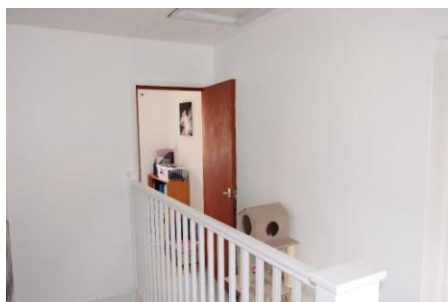
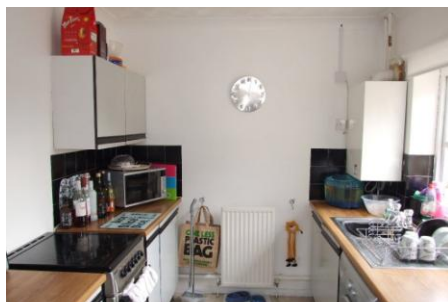
BATHROOM Three piece suite comprising panelled bath with electric shower over, pedestal wash hand basin and low-level WC, ceramic tiling, vinyl flooring, coving to ceiling.

DIRECTIONS Travelling into March along The Avenue straight over the traffic lights and the property can be found on the right hand side behind the vets.

VIEWINGS

By appointment with Ellis Winters.

EPC Rating—E
Council Tax - A



Ellis Winters & Co 52 High Street, March, Cambridgeshire, PE15 9JR
Tel: 01354 701000 Email: info@elliswinters.co.uk www.elliswinters.co.uk