

£190,000

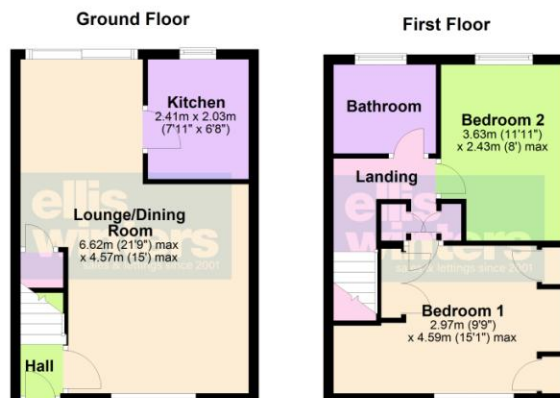
5 Fleetwood Close, March, PE15 9NN



To arrange a viewing call us now on 01354 701000

Offered with NO CHAIN this lovely home is ideal for first time buyers or investors.

Accommodation includes KITCHEN WITH OVEN AND HOB, lounge/diner opening onto the garden, TWO BEDROOMS plus a REFITTED BATHROOM. Outside there is OFF ROAD PARKING AND LOW MAINTENANCE GARDEN. The home benefits from a brand new boiler! EPC B



# £190,000

5 Fleetwood Close, March, PE15 9NN



## Ground Floor

### Hall

Radiator, stairs to first floor and landing

### Lounge/Dining Room

6.62m (21'9") max x 4.57m (15') max  
Window to front, two radiators, patio doors to garden, storage cupboard.



### Kitchen

2.41m (7'11") x 2.03m (6'8")  
Fitted with wall and base units with integral oven, hob and hood, plumbing for washing machine, sink unit with mixer tap, window to rear.



### First Floor & Landing

Cupboard housing gas fired boiler (fitted 01/01/24), airing cupboard housing hotwater tank and shelving, access to loft.

### Bedroom 1

4.59m (15'1") max x 2.97m (9'9")  
Window to front, fitted wardrobes and cupboards, radiator.



### Bedroom 2

3.63m (11'11") x 2.43m (8') max  
Window to rear, radiator.

### Bathroom

Refitted and fully tiled, fitted with a three piece suite comprising bath with shower over, wash hand basin, WC, window to rear, heated towel rail.

### Outside

To the front of the house there is a double driveway providing off road parking. The rear garden is laid to patio and artificial grass with garden shed, water supply and gate at the rear.



### Freehold

Council tax band A

Ellis Winters & Co 52 High Street, March, Cambridgeshire, PE15 9JR

Tel: 01354 701000 Email: [info@elliswinters.co.uk](mailto:info@elliswinters.co.uk) [www.elliswinters.co.uk](http://www.elliswinters.co.uk)

Ellis Winters has not tested any apparatus, equipment fitting or services and so cannot verify that they are in working order. The buyer is advised to obtain verification from their solicitor or surveyor. Floor plans are for representational purposes only and are not to scale.