



## Thorndon Avenue, West Horndon

Stunning two bedroom apartment located in a tasteful Art Deco styled development of apartments. Property comprises; two double bedrooms with an en-suite shower room to the principal, good size open plan living room/diner/kitchen and bathroom. Externally the property comes with an allocated parking space. The apartment is within 0.2 miles of West Horndon mainline station which serves London Fenchurch Street station within 30 minutes. Available now. EPC C.

£1,400 pcm

Council Tax Band D

01277 225191  
lettings@wnproperties.co.uk



### Entrance Hall

Wood effect flooring, entry door phone system, airing cupboard and doors to;

### Open plan living

Kitchen area - 8' 5" x 8' 2" Range of wall and base fitted units with contrasting work surfaces, breakfast bar with space for stools, gas hob and electric oven, integrated washer/drier and dishwasher, stainless steel sink and mixer tap, glass wall separating kitchen and hallway. Lounge/Dining area - 18' 7" into bay x 14' 7" Spacious room with stunning bay window external door. Wood effect flooring.



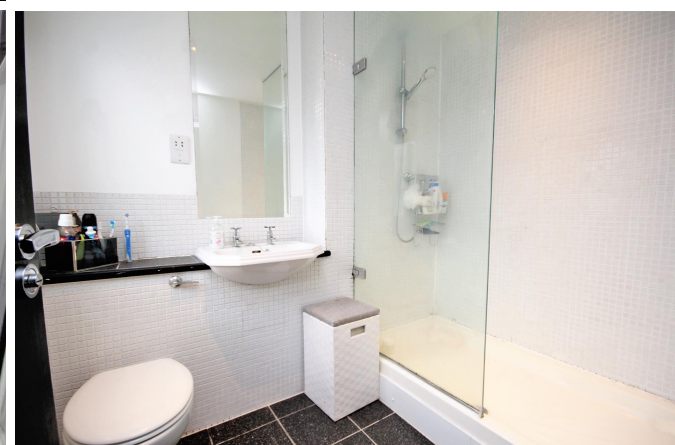
Bedroom 1 13' 2" into door recess x 11' 1" (4.01m x 3.38m)

Double bedroom, double glazed window to rear, radiator and door to;



### En-suite

Concealed cistern WC, wash hand basin, large shower with glass screen, part tiling to walls, tiled floor, heated towel rail and sensed lighting.



Bedroom 2 11' 1" x 9' 5" (3.38m x 2.87m)

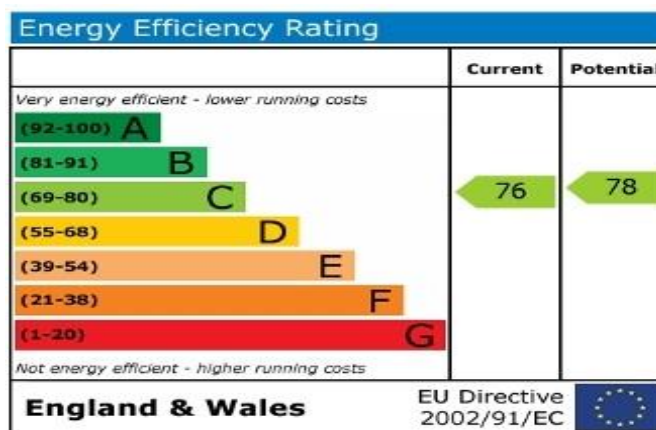
Double bedroom, hot water tank housed in cupboard, radiator and double glazed window to rear.

### Bathroom

Concealed cistern WC, wash hand basin, bath with tiled panelling to side, part tiled walls, tiled flooring, heated towel rail and sensed lighting.

### Externally

Allocated car parking space.



## HOLDING DEPOSIT

A one week holding deposit is required to secure this property. Please ask for a copy of our 'Guide for Tenants' for a full list of costs applicable to this or any of our properties. Please note your holding deposit is at risk if you withdraw from the transaction or do not disclose something that affects your ability to pass references.