



Abyssinia Close, Battersea, SW11

A rare chance to rent an unfurnished 3 bedroom terraced house with private garden just off Northcote Road. Accommodation comprises; ground floor WC, spacious open-plan reception, leading to a modern kitchen, two double bedrooms, one single bedroom and a modern bathroom with shower over bath. Throughout the property there are various storage cupboards, as well as external storage to the front. A pretty private rear garden lies off the living room area and there is off street parking to the front for one car. The property lies within 0.3 mile walk to Clapham Junction station. Available mid October '25. EPC D.

01277 225191
 lettings@wnproperties.co.uk



£3,300 pcm

Council Tax Band D



Entrance Hallway with built-in storage

Guest WC

Lounge/Diner;
22' 6" x 13' 11" (6.85m x 4.24m)

Open plan to;

Kitchen with fitted appliances
10' 5" x 7' 7" (3.17m x 2.31m)

First Floor Landing with built-in storage

Bedroom 1
13' 11" x 10' 5" (4.24m x 3.17m)

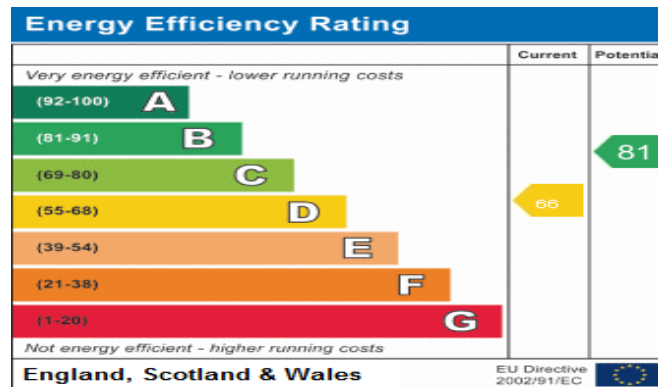
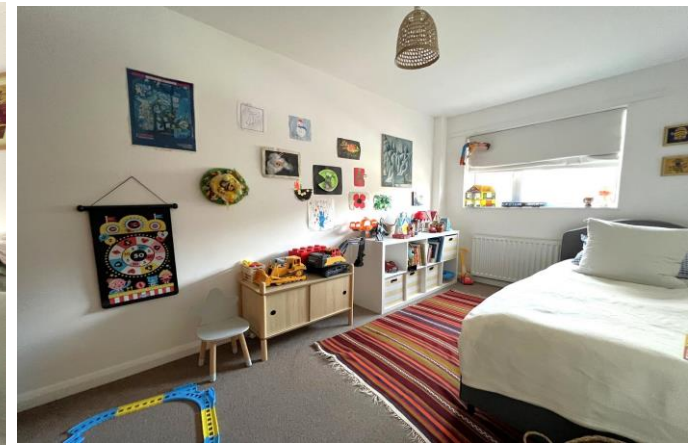
Bedroom 2
14' 8" x 8' 0" (4.47m x 2.44m)

Bedroom 3
13' 2" into recess x 5' 7" (4.01m x 1.70m)

Family Bathroom

Exterior - Private rear garden

Parking: Off street parking for one car



HOLDING DEPOSIT

A one week holding deposit is required to secure this property. Please ask for a copy of our 'Guide for Tenants' for a full list of costs applicable to this or any of our properties. Please note your holding deposit is at risk if you withdraw from the transaction or do not disclose something that affects your ability to pass references.