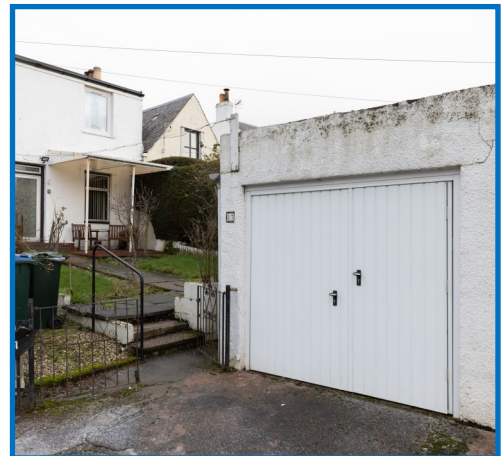


**17 Windsor Terrace, Perth**

**Offers Over £85,000**

**JAMESON  
+ MACKAY**  
SOLICITORS AND ESTATE AGENTS



**2 Bedroom - 1 Bathroom - 1 Living Room**



This spacious 2-bedroom ground floor maisonette offers fantastic potential in a prime location. Featuring a generous garden space, perfect for outdoor entertaining or gardening enthusiasts, and a detached garage for convenient parking and storage.

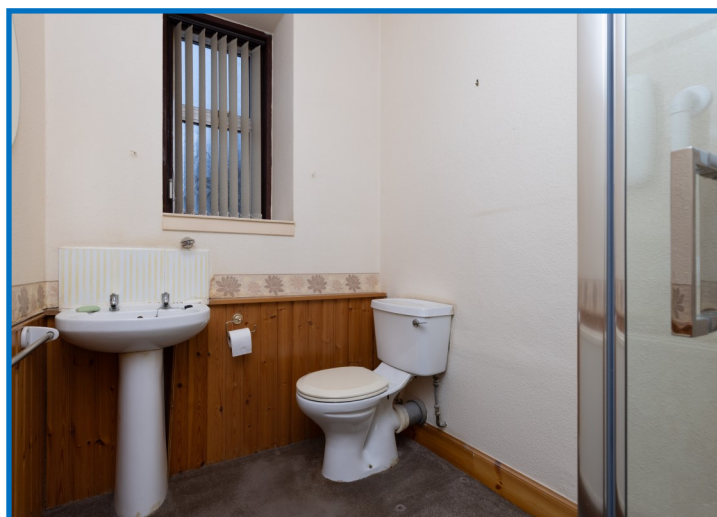
The property requires renovation and upgrades, providing an excellent opportunity to create a personalized dream home. Ideally situated close to local amenities, schools, and transport links, this maisonette is perfect for buyers looking to add value and customize to their taste.

Don't miss out on this exciting project!

- \* EPC Rating: C

- \* Council Tax: Band: B

- \* Local Authority: PKC



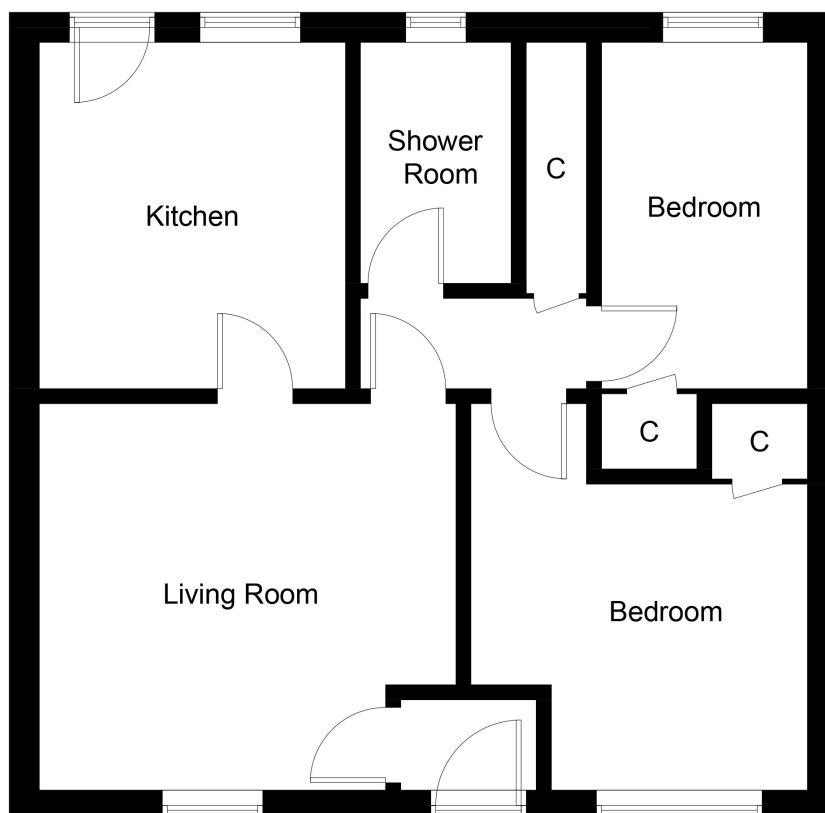


Illustration for identification purposes only, measurements are approximate,  
not to scale. Fourlabs.co © (ID1252605)

1 Charlotte Street , Perth, United Kingdom , PH1 5LP  
71 High Street, Auchterarder PH3 1BN

01764 663 830

[property@jamesonmackay.co.uk](mailto:property@jamesonmackay.co.uk)

[www.jamesonmackay.co.uk](http://www.jamesonmackay.co.uk)

Disclaimer

The Agent has not tested any apparatus, equipment, fixtures and fittings or services and so cannot verify that they are in working order or fit for purpose. The mention of any appliances and services within these details does not imply that they are in full efficient working order. A buyer is advised to obtain verification from their Solicitor or Surveyor. References to the Tenure of a Property are based on information supplied by the Seller. The Agent has not had sight of the title documents. A Buyer is advised to obtain verification from their Solicitor. We have taken every precaution to ensure that these details are accurate and not misleading. If there is any point which is of particular importance to you, please contact us and we will endeavour to ascertain the information you require. This is advisable, particularly if you intend to travel some distance to view the property. You are advised to check the availability of this property before travelling any distance to view.