



Ebbisham Drive, SW8

£577 Per week

A spacious three double bedroom house which is ideally located in central Vauxhall. The property also offers a large reception room, study/office, family bathroom, WC and a private south facing garden.

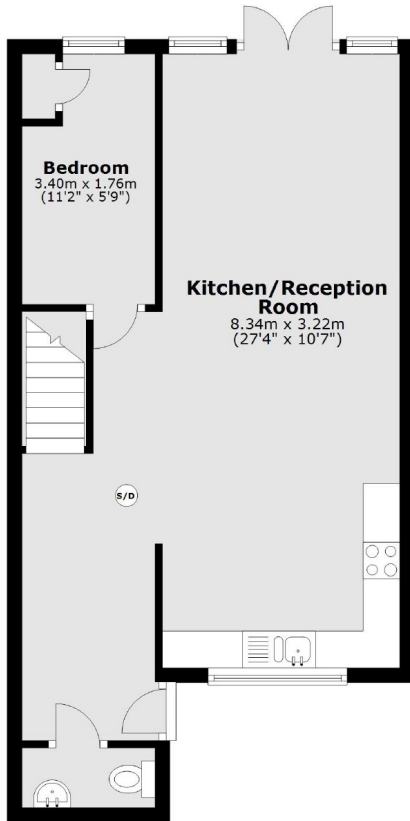
Ebbisham Drive has a variety of shops, restaurants and pubs nearby as well as Vauxhall Park on it's doorstep. Easy access to Vauxhall Tube and Train Stations.

Features

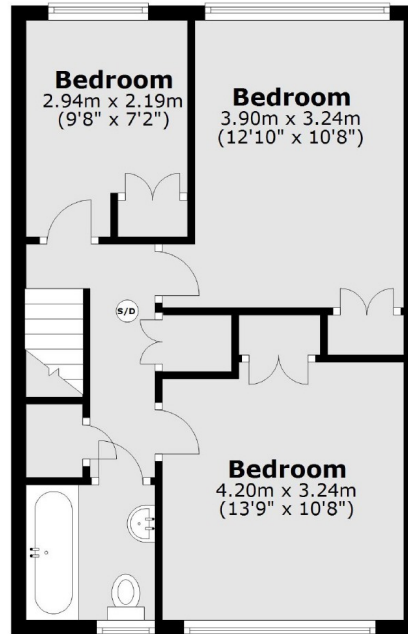
- Four Double Bedrooms
- Large Reception
- Private Garden
- Family Bathroom
- Ideal For Sharers
- Great Location

Ebbisham Drive,
London, SW8

Ground Floor



First Floor



Total area: approx. 87.8 sq. metres (945.4 sq. feet)

Dexters

Vauxhall
377-379 Kennington Lane
London
SE11 5QY
Lettings
020 7793 8111

Energy Rating: D. We aim to make our particulars both accurate and reliable. However they are not guaranteed; nor do they form part of an offer or contract. If you require clarification on any points then please contact us, especially if you're traveling some distance to view. Please note that appliances and heating systems have not been tested and therefore no warranties can be given as to their good working order.

 **RICS** | Regulated
Estate Agent
and Letting Agent

dexters.co.uk