



Templar Street, SE5

£738 Per week

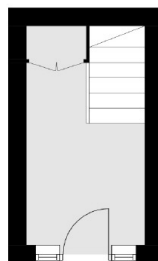
Located on the tranquil Templar Street, this beautifully presented 1,500 sq ft split-level maisonette offers the perfect blend of space, style, and location. Boasting its own private entrance, this three-bedroom home is filled with natural light and has been maintained to a high standard throughout.

Set just moments from the beautifully kept Myatt's Fields Park with its tennis courts, café, and landscaped gardens the location offers a peaceful retreat while remaining well connected to central London.

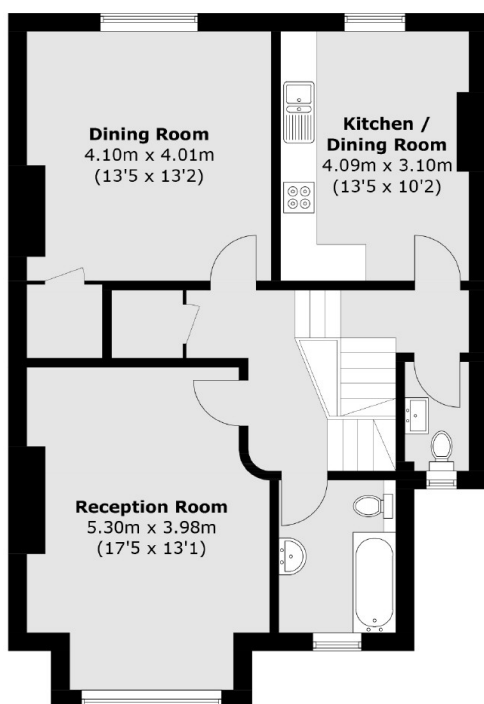
Features

- Three Bedrooms
- Two Bathrooms
- High Ceilings
- Modern Kitchen
- Dining Room

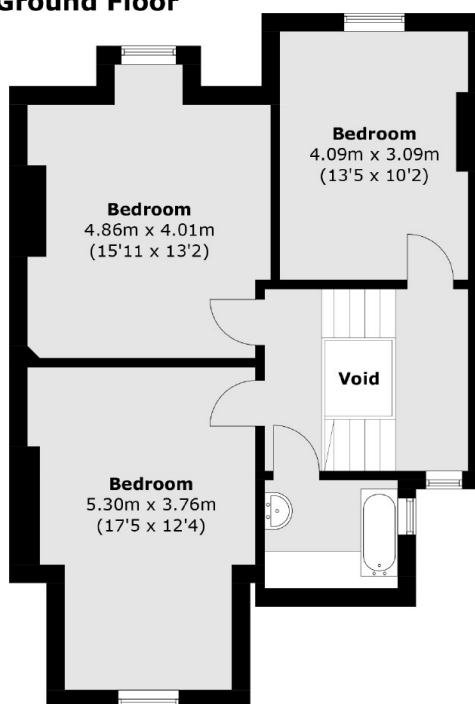
Templar Street, London, SE5



Ground Floor



First Floor



Second Floor

Total area (approx.): 140.3 sq. m (1,510.1 sq. ft)
(Excluding Void)