



Brook Drive, SE11

£507 Per week

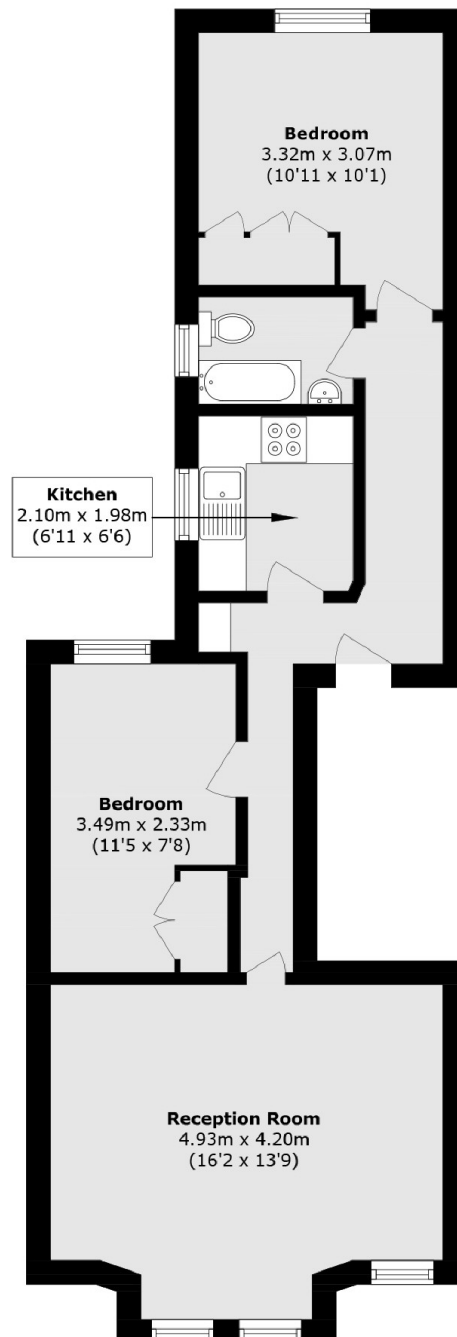
This First floor two bedroom period conversion flat features two double rooms, separate kitchen, modern bathroom and large lounge. The property is offered furnished and would be ideal for sharers.

Located on this popular residential street located just a short walk from Lambeth North, Kennington and Elephant & castle tubes along with easy access to local amenities.

Features

- Two Bedrooms
- Separate Kitchen
- Modern Bathroom
- Large Reception
- Split Level Flat
- Prime Location

Brook Drive,
London, SE11



Total area (approx.): 55.3 sq. m (595.2 sq. ft)

Dexters

Vauxhall
377-379 Kennington Lane
London
SE11 5QY
Lettings
020 7793 8111

Energy Rating: C. We aim to make our particulars both accurate and reliable. However they are not guaranteed; nor do they form part of an offer or contract. If you require clarification on any points then please contact us, especially if you're traveling some distance to view. Please note that appliances and heating systems have not been tested and therefore no warranties can be given as to their good working order.

 **RICS** | Regulated
Estate Agent
and Letting Agent

dexters.co.uk