

## New Union Square, SW11

£1,000 Per week

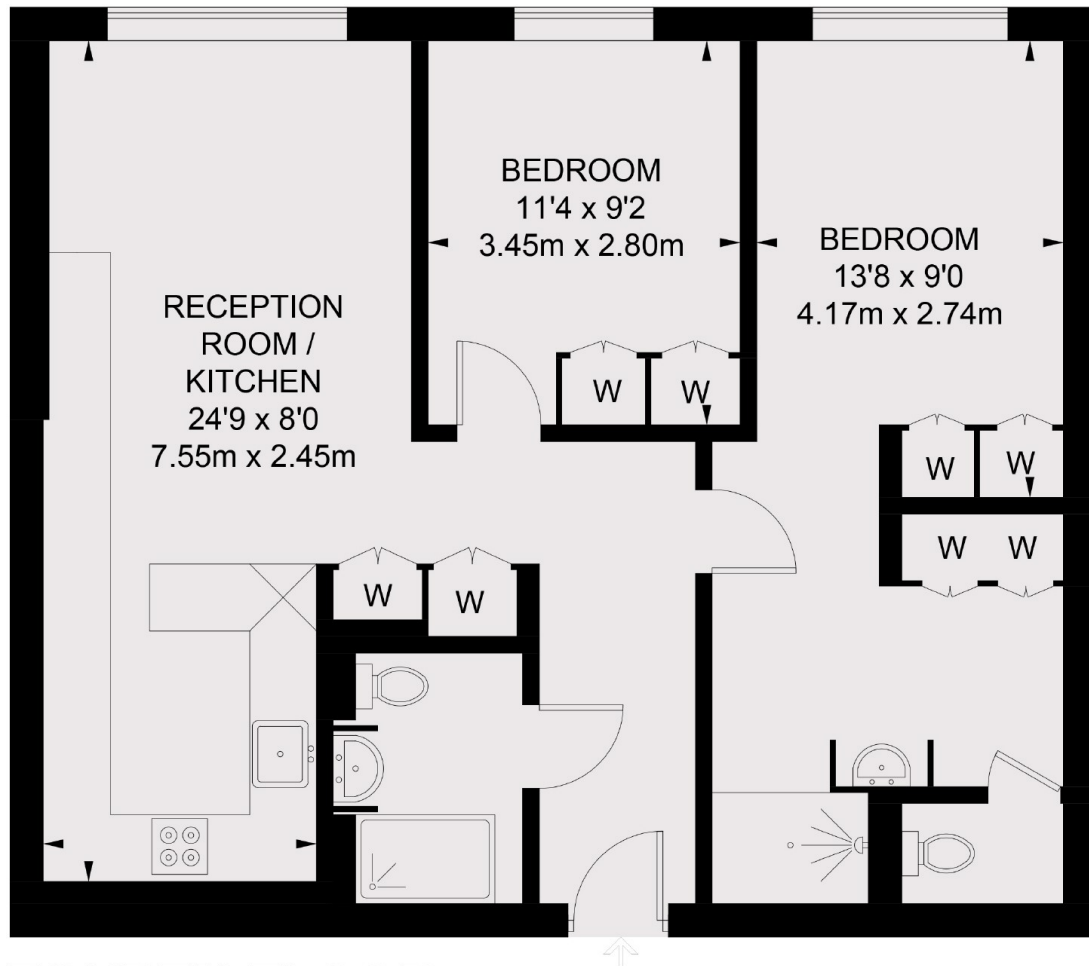
A stunning two double bedroom apartment available to let within Embassy Gardens. The property also offers two bathrooms and a living room with open plan kitchen and all of the wonderful features that this development has to offer including, 24 hour concierge, residents cinema, swimming pool, gym and spa.

Embassy Gardens is a new development located in the very exciting Nine Elms area home to the Battersea Power Station close to transport links including Vauxhall underground and bus station.

### Features

- Luxury Development
- Premium Facilities
- High Specification
- Two Bedrooms
- Two Bathrooms
- Available ASAP

New Union Square,  
London, SW11



## FOURTH FLOOR

TOTAL APPROX. FLOOR AREA 764 SQ. FT. (71 SQ. M.)

**Dexters**

Vauxhall  
377-379 Kennington Lane  
London  
SE11 5QY  
Lettings  
020 7793 8111

Energy Rating: B. We aim to make our particulars both accurate and reliable. However they are not guaranteed; nor do they form part of an offer or contract. If you require clarification on any points then please contact us, especially if you're traveling some distance to view. Please note that appliances and heating systems have not been tested and therefore no warranties can be given as to their good working order.

 **RICS** | Regulated  
Estate Agent  
and Letting Agent

[dexters.co.uk](https://www.dexters.co.uk)