



Fleming Road, SE17

£690 Per week

A well presented four bedroom end of terraced house, which ideally positioned for Kennington Station (Northern Line). The property offers a large reception, kitchen/breakfast room, modern bathroom and a private rear garden.

The house is Ideally positioned for access to the Northern Line and the open spaces of Kennington Park.

Features

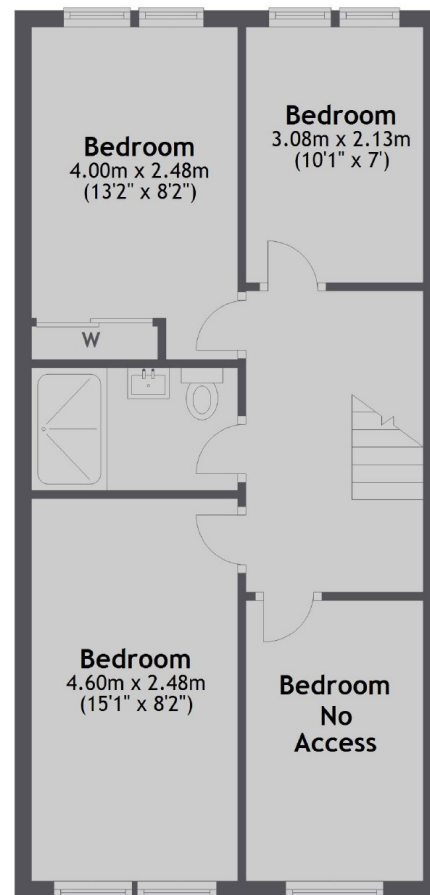
- Four Bedrooms
- Eat-In Kitchen
- End Of Terrace
- Modern Bathroom
- Kennington Station
- Private Garden

Fleming Road,
London, SE17

Ground Floor



First Floor



Total area: approx. 94.3 sq. metres (1015.4 sq. feet)

Contact

To arrange a viewing call our office on the number below or visit our website.



Energy Rating: D. We aim to make our particulars both accurate and reliable. However they are not guaranteed; nor do they form part of an offer or contract. If you require clarification on any points then please contact us, especially if you're traveling some distance to view. Please note that appliances and heating systems have not been tested and therefore no warranties can be given as to their good working order.