

Nine Elms Lane, SW8

£650 Per week

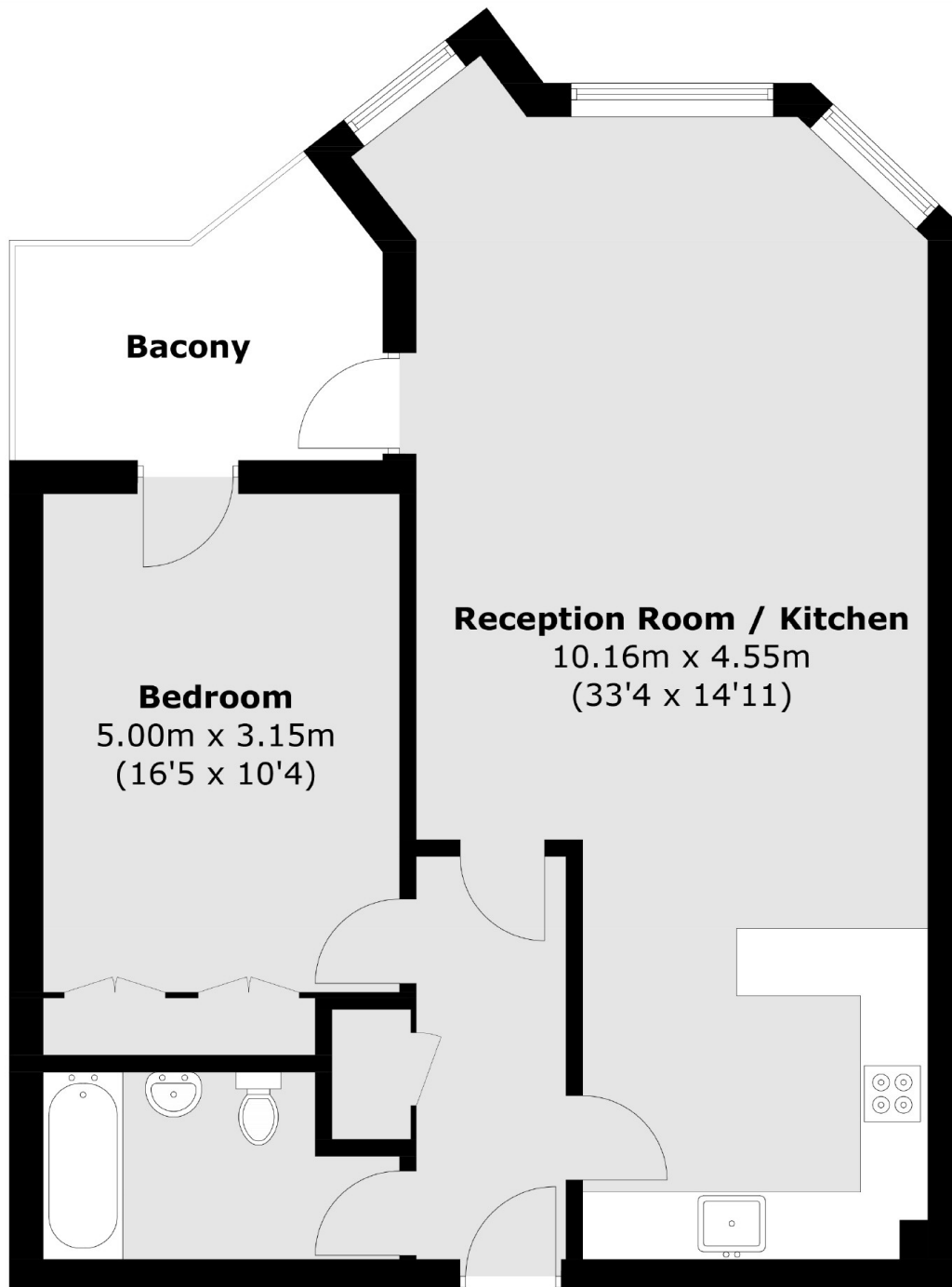
This beautifully maintained one-bedroom apartment offers stylish riverside living in this sought-after development. Boasting a bright and spacious reception area, this home features an open-plan modern kitchen, a generously sized double bedroom, and a private balcony. The entire flat and balcony offer panoramic views of the River Thames.

Riverside Court is ideally positioned with excellent transport links (tube, train, bus, and riverboat) and is just moments from the vibrant Battersea Power Station, with its array of shops, restaurants, and bars.

Features

- One Double Bedroom
- Spacious Reception
- River Views
- High Specification
- Private Balcony
- Prime Location

Nine Elms Lane,
London, SW8



Total area (approx.): 69.4 sq. m (747.0 sq. ft)
Balcony area (approx.): 6.9 sq. m (74.3 sq. ft)

Dexters

Vauxhall
377-379 Kennington Lane
London
SE11 5QY
Lettings
020 7793 8111

Energy Rating: C. We aim to make our particulars both accurate and reliable. However they are not guaranteed; nor do they form part of an offer or contract. If you require clarification on any points then please contact us, especially if you're traveling some distance to view. Please note that appliances and heating systems have not been tested and therefore no warranties can be given as to their good working order.

 **RICS** | Regulated
Estate Agent
and Letting Agent

dexters.co.uk