



Phelp Street, SE17

£508 Per week

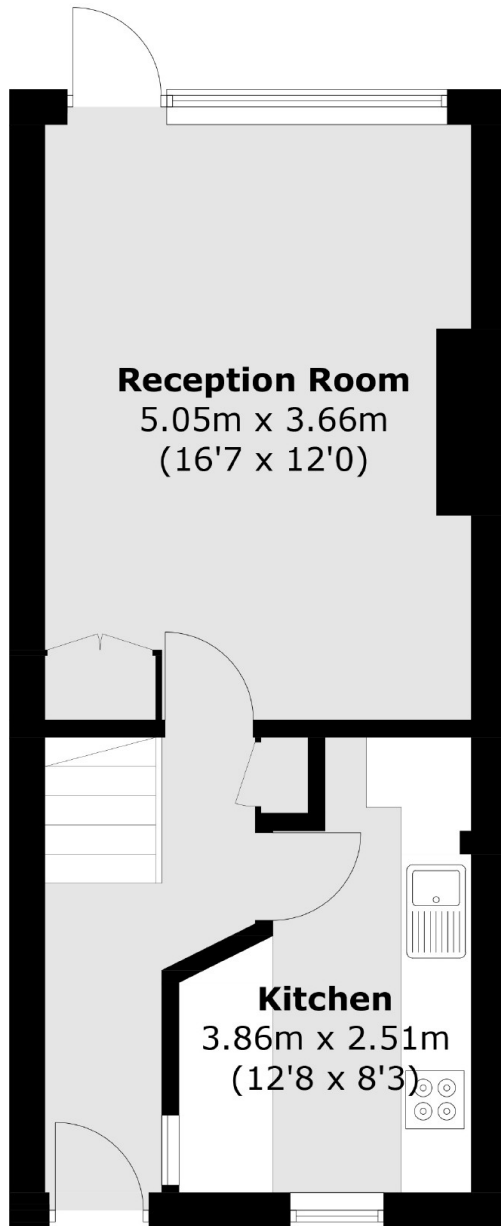
A beautiful two double bedroom house recently refurbished creating a sociable open plan living space which combines brilliantly with the stylish matte finish kitchen. The property is flooded with natural light throughout and benefits further from a beautiful bathroom and loft storage.

Quietly Located just moments from Burgess Park and vibrant Walworth Road, this well positioned property has access to excellent bus links into the city and Elephant & Castle.

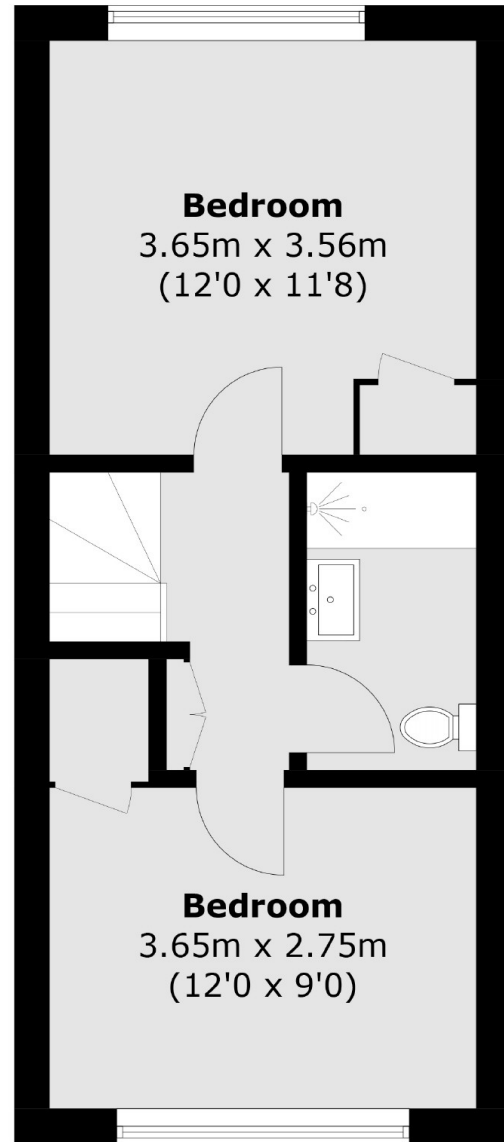
Features

- Two Double Bedrooms
- Spacious Reception
- Quiet Location
- Private Garden
- Wooden Flooring
- Prime Location

Phelp Street,
London, SE17



Ground Floor



First Floor

Total area (approx.): 67 sq. m (721.2 sq. ft)

Dexters

Vauxhall
377-379 Kennington Lane
London
SE11 5QY
Lettings
020 7793 8111

Energy Rating: D. We aim to make our particulars both accurate and reliable. However they are not guaranteed; nor do they form part of an offer or contract. If you require clarification on any points then please contact us, especially if you're traveling some distance to view. Please note that appliances and heating systems have not been tested and therefore no warranties can be given as to their good working order.

 **RICS** | Regulated
Estate Agent
and Letting Agent

dexters.co.uk