



St. George Wharf, SW8

£692 Per week

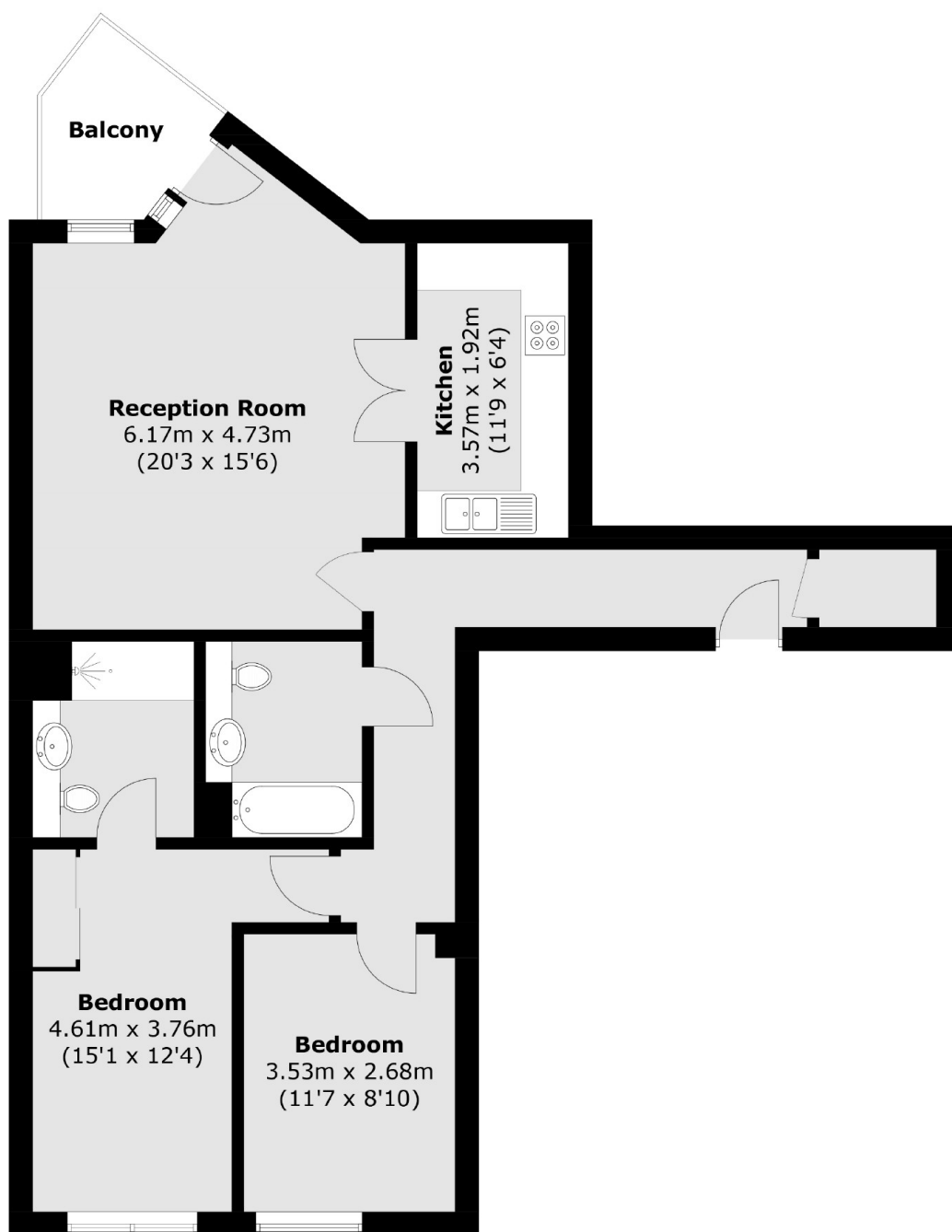
A contemporary two-bedroom apartment situated within the sought-after St. George Wharf development. This stylish property features a spacious reception room, an open-plan kitchen, two modern bathrooms, and a private balcony offering stunning riverside views.

Ideally located on the River Thames which offers an excellent variety of different restaurants, bars and coffee shops. Vauxhall station is within easy access.

Features

- Two Double Bedrooms
- Two Bathrooms
- Private Balcony
- Riverside Development
- Modern Throughout
- 24-Hour Concierge

St. George Wharf, London, SW8



Total area (approx.): 79.5 sq. m (855.7 sq. ft)
Balcony : 3.9 sq. m (42.0 sq. ft)

Dexters

Vauxhall
377-379 Kennington Lane
London
SE11 5QY
Lettings
020 7793 8111

Energy Rating: C. We aim to make our particulars both accurate and reliable. However they are not guaranteed; nor do they form part of an offer or contract. If you require clarification on any points then please contact us, especially if you're traveling some distance to view. Please note that appliances and heating systems have not been tested and therefore no warranties can be given as to their good working order.

 **RICS** | Regulated
Estate Agent
and Letting Agent

[dexters.co.uk](https://www.dexters.co.uk)