



## Nine Elms Lane, SW8

£554 Per week

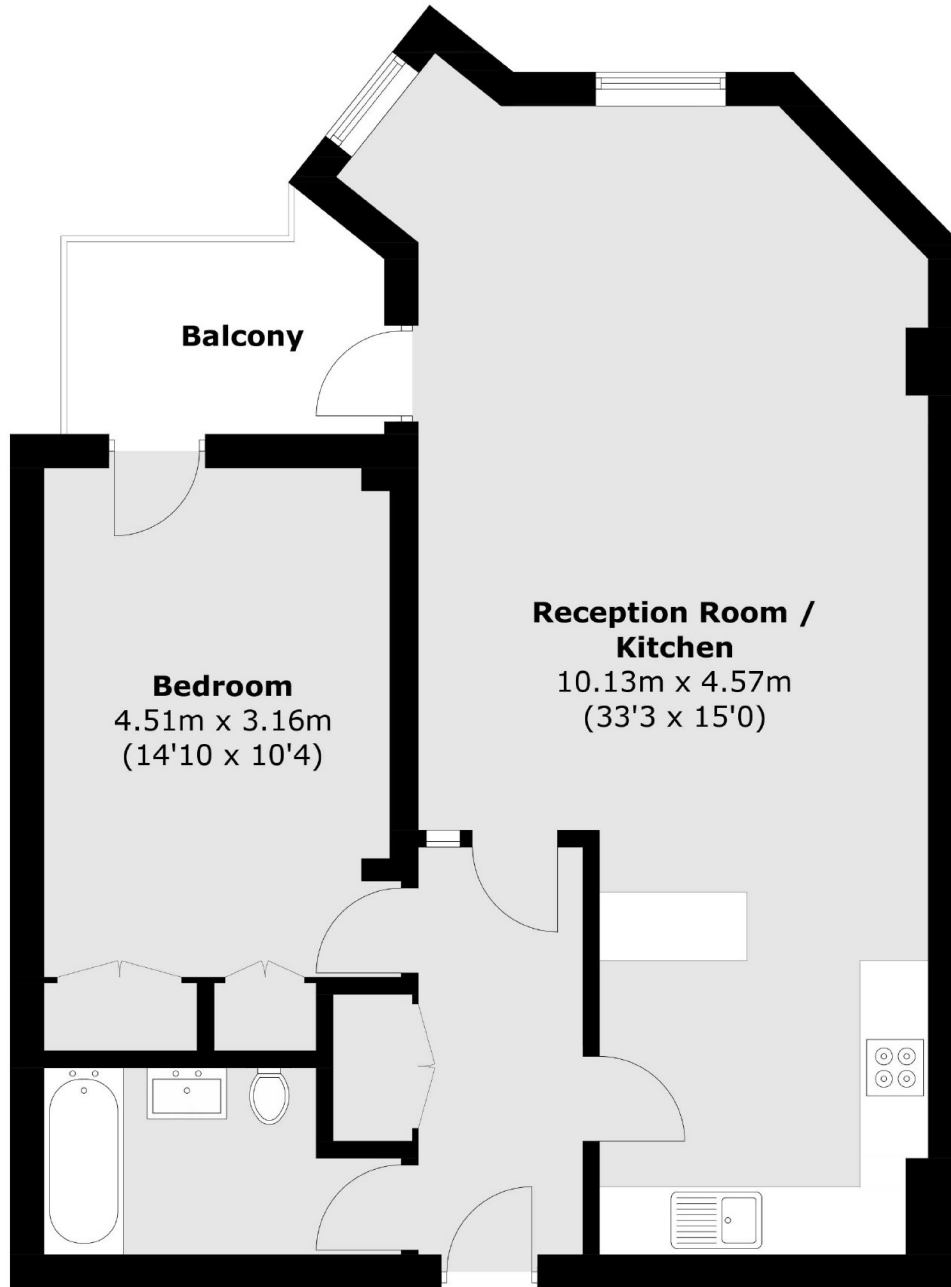
A spacious one double bedroom apartment set within this prestigious Riverside development. Further features include a bright and spacious reception room, modern kitchen, tiled bathroom and a private balcony.

Riverside Court is located close to Nine Elms (Northern Line), Vauxhall (Victoria Line) and overground stations. The property offers superb riverside living, close to the restaurants and bars that Nine Elms & Vauxhall has to offer.

### Features

- One Bedroom Apartment
- Well-Presented Throughout
- Large Reception Room
- Excellent River Views
- Private Balcony
- Heating & Hot Water Included

Nine Elms Lane,  
London, SW8



Total area (approx): 6888 sq. m (7405 sq. ft)  
Balcony area: 510 sq. m (5388 sq. ft)

**Dexters**

Vauxhall  
377-379 Kennington Lane  
London  
SE11 5QY

Lettings  
020 7793 8111

Energy Rating: C. We aim to make our particulars both accurate and reliable. However they are not guaranteed; nor do they form part of an offer or contract. If you require clarification on any points then please contact us, especially if you're traveling some distance to view. Please note that appliances and heating systems have not been tested and therefore no warranties can be given as to their good working order.

 **RICS** | Regulated  
Estate Agent  
and Letting Agent

dexters.co.uk