



Wansley Street, SE17

£1,000 Per week

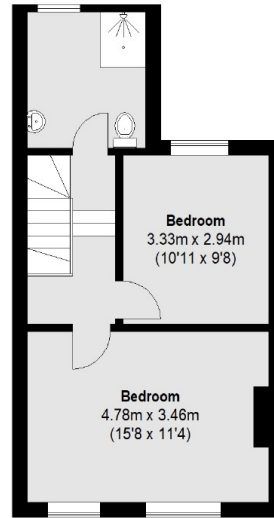
A four bedroom award winning Eco-Home located in the heart of the Elephant & Castle regeneration area. Featuring a bright double reception room and a beautiful fitted kitchen which leads out to a south-facing garden.

Outstanding transport links within a 5 minute walk - Bakerloo & Northern lines, 1 mainline, 30+ bus routes into central London and suburbs, Santander bike zone. Quiet Cul-de-sac location with on street permit parking.

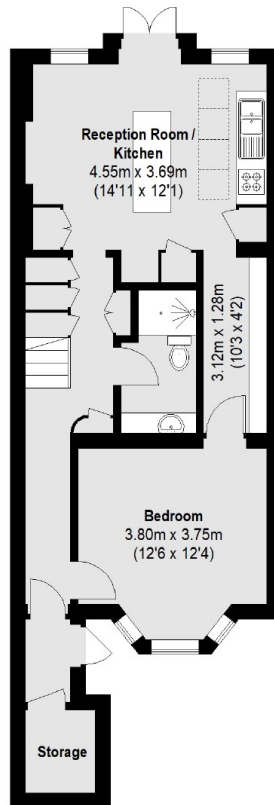
Features

- Award Winning Eco-Home
- Four Bedroom House
- Two Bathrooms
- South Facing Garden
- Excellent Transport Links
- Great Location

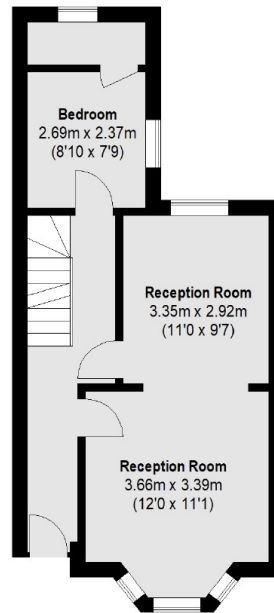
Wansey Street,
London, SE17



First Floor



Lower Ground Floor



Ground Floor

Total area (approx.): 137.6 sq. m (1481 Sq. ft)
(Excluding Storage)